



THE CHOICE OF WORLD CLASS SPAS



THE PREFERRED CHOICE OF THE WORLD'S FINEST SPAS AND RESORTS

For over 40 years, Living Earth Crafts has built its reputation as the finest manufacturer of luxurious, innovative and exceptionally durable spa treatment tables. Living Earth Crafts products can be found in the finest destination resorts and spas in over 100 countries around the world, including: The Ritz Carlton, Four Seasons, Mandarin Oriental, ESPA International, Fairmont and Rosewood Hotels and Resorts.

HANDCRAFTED ELEGANCE

Living Earth Crafts spa tables are handcrafted and built-to-order in our factory in Vista, California. Many of our employees have been with L·E·C for 15 years or more, dedicating their careers to the art of creating beautiful, reliable, state-of-the-art spa treatment tables and accessories, all customizable to fit any high-end spa décor.

CLIENT COMFORT BEYOND COMPARE

Nothing helps the profitability of a spa more than repeat business. And nothing inspires your spa guest more than a luxurious experience of pampering and relaxation. LEC helps to accomplish this with plush features, such as our Strata™ memory foam cushioning system the Caress™ self-adjusting platform with Strata™ FacePillow. Add features such as the Conforma™ Pregnancy top, Bluetooth® speakers or PivotPerfect™ side arms for the ultimate, unforgettable experience that will bring your clients back again and again.

ZERO CARBON FOOTPRINT

L·E·C's sustainable manufacturing standards call out managed forest hardwoods, water-based lacquers and glues, eco-friendly Natursoft™ upholstery and CFC-free foams. L·E·C was the first spa treatment table manufacturer to achieve certification from the Forest Stewardship Council (FSC). Every year, we make sizeable donations to local, national and global conservation and relief programs, with our multiple plant-a-tree partnerships, completely offsetting our carbon footprint. In fact, the Green Spa Network voted Living Earth Crafts "Sustainable Manufacturer of the Year" in 2015.

EXCEPTIONAL CUSTOMER SERVICE

Living Earth Crafts tables arrive on time and in pristine condition. Clients can expect years of trouble-free use, but should the need ever arise, our customer service team is ready to assist in any way possible. We proudly offer the industry's best, worldwide treatment table warranty, as we are confident that our products will perform to your highest expectations.

†STUDIO

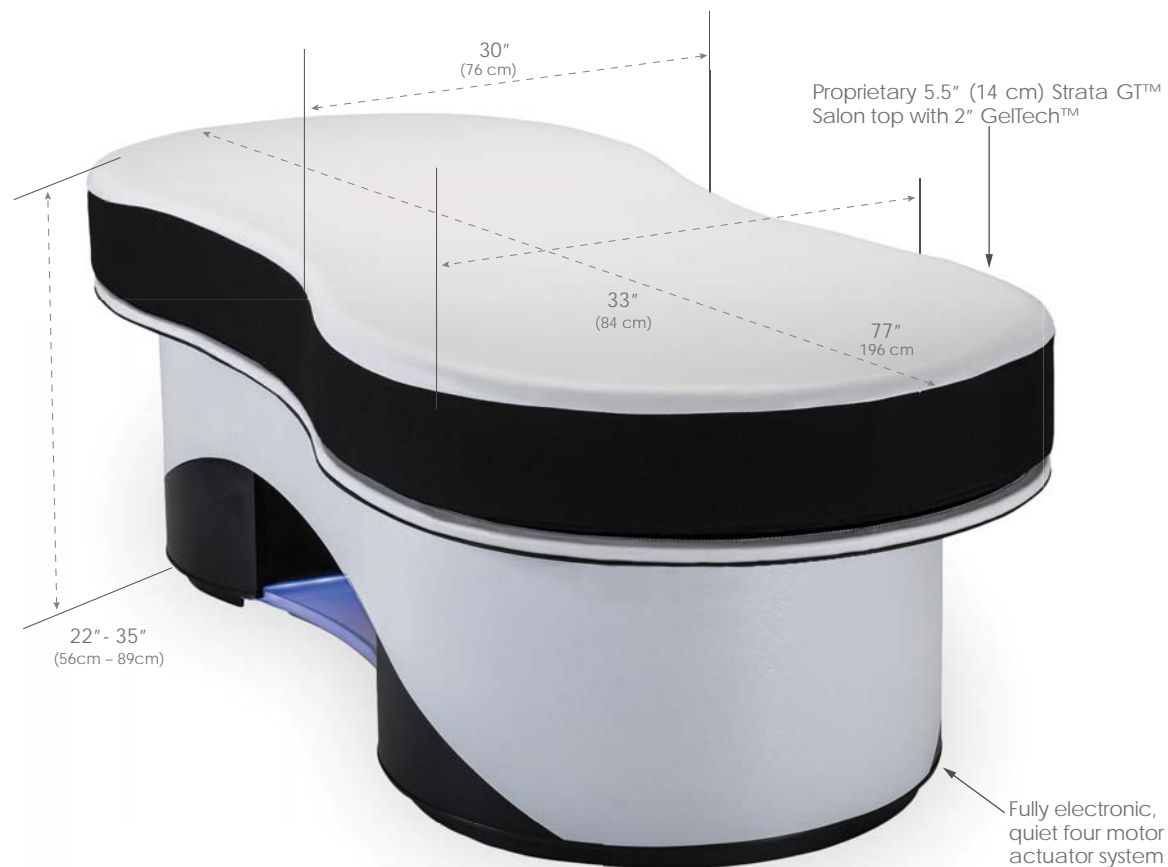
As the global leader in massage and spa equipment manufacturing, Living Earth Crafts has ventured beyond the standards that built our reputation for quality and craftsmanship to offer you something truly extraordinary. By reimagining the way products are designed, desired, and ultimately utilized, we have created a limited line of spa furniture meant to provide the world's most distinguished spas with our sleekest, most avant-garde design concepts.

INFINITY GT

COUTURE • SUMPTUOUS • REVOLUTIONARY



PROGRAMMABLE ELECTRIC SALON TOP • STRATA GT™ SPAMATTRESS™ WITH GELTECH™
PREMIUM PROMESSA® UPHOLSTERY • LED CHROMA LIGHTING (16 COLORS) • +STUDIO FINISHES



Dimensions

- Length: 77" (196 cm)
- Width at middle: 30" (76 cm)
- Width at widest: 33" (84 cm)
- Height Range: 22" – 35" (56 cm - 89 cm)
- Recommended Lift Capacity: 500 lbs. (228 kg.)

Electrical

- 110V / 220V available
- International plug options



listed motors & controls



INFINITY GT™

MULTIPURPOSE TABLE

A dual-pedestal table like no other, the Infinity GT™ is the industry's first spa treatment table to incorporate molded gel spring-back technology into its salon top mattress, enabling unsurpassed client comfort. The Infinity's hourglass shaped GT SpaMattress™ floats on two rounded pedestal columns. Underneath the hood is a whisper-quiet motor system controlled by wireless hand and foot remotes for easy client positioning and swift table height adjustments. The Infinity GT's compact frame doesn't compromise its ergonomic height range.

FEATURES

- Programmable, all electric SpaMattress™ with soft start/soft stop technology
- Removable 5.5" Strata GT™ SpaMattress™ with GelTech™ technology
- LED lit IceBlock™ shelf (16 colors)
- Premium laminate options

OPTIONS

- Embedded table warmer
- Caress™ self-adjusting facecradle with Strata™ or Strata™ Cool FacePillow
- Six-button foot control for full table control
- So Sound® Acoustic Resonance Therapy system



SpaMattress with GelTech™ spring-back layer for unsurpassed comfort



Wireless hand and foot controls for a clean workspace



LED-lit IceBlock™ shelf emits a warm glow in 16 color options

CENTURY CITY SPA TREATMENT TABLE

DUAL PEDESTAL SUPER LOW-RANGE TABLE



LOWEST TRUE-MEASURE HEIGHT RANGE • IR WIRELESS REMOTE CONTROL
SLEEK LED LIT CABINETY • WHISPER QUIET ACTUATORS • LUXURIOUS AND
HAND FINISHED UPHOLSTERY • OPTIONAL GT™ SPAMATTRESS WITH GELTECH™



Dimensions

- Width Options: 28", 30", 32" (71 cm, 76 cm, 81 cm)
- Length: 73" (185 cm)
- Standard height range: 20.5" - 36" (51 cm-91.5 cm)
- ADA edition height range: 19.5"-35.5" (50 cm-90 cm)
- GT™ SpaMattress™ height range: 22"-38" (56 cm-97 cm)
- Recommended Lift Capacity: 500 lbs. (228 kg.)

Electrical

- 110V / 220V available
- International plug options

UL listed motors & controls | CE



SpaMattress with GelTech™ spring-back layer for unsurpassed comfort



Wireless hand and foot controls for a clean work space

CENTURY CITY SPA TREATMENT TABLE DUAL PEDESTAL SUPER LOW-RANGE TABLE

This spa treatment table is the latest innovation from L•E•C, featuring the industry's lowest "true-measure" height range. It offers electric height adjustment, a fully electric salon top, and well-situated tilt-out storage spaces for extra storage and convenience. Options include the super soft and comfortable Strata GT™ SpaMattress™ that provides the perfect balance between softness and response, a heated top, designer laminates, luxury upholstery, tilt-out cabinets for a modern-design finish to name a few.

FEATURES

- Strata™ 4" memory foam system
- Digital warming drawer with variable heat & timing settings for towels, stones or dry linens
- LED color-changing chromatherapy lighting system
- Wireless hand control and foot pedal
- 4 tilt-out cabinets for ample discreet storage

OPTIONS

- Strata GT™ SpaMattress™ system with GelTech™ technology
- Adjustable, Pivot-Perfect arm rests (excludes GT SpaMattress™)
- Embedded table warmer for guest comfort
- So Sound® Acoustic Resonance Therapy system
- Caress or Flex-Rest platform with Strata FacePillow™
- Six-button foot pedal for full table control



Digital Warming Drawer for towels, stones, or dry linens and 4 discreet tilt-out soft-close cabinets

NUAGE

ALL-ELECTRIC MULTI-PURPOSE TABLE



Nuage
Pedestal



Cuvee



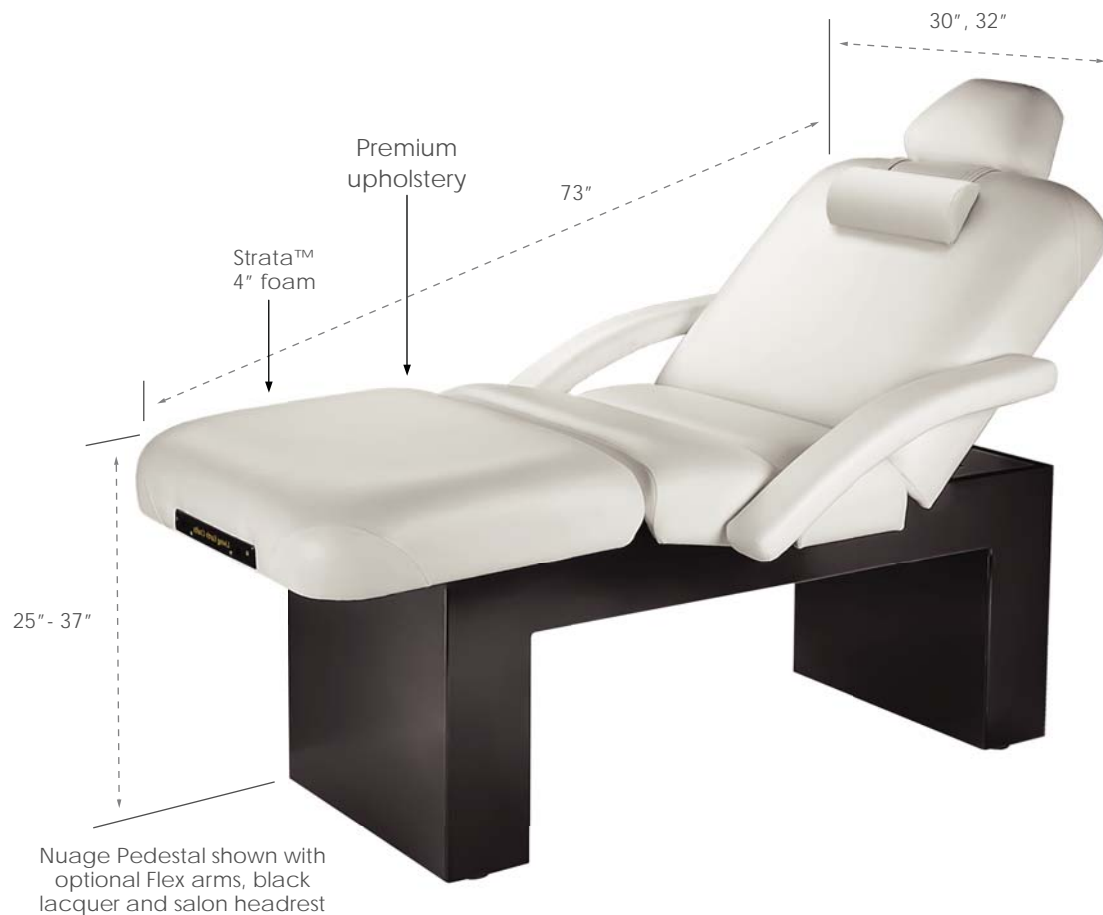
Contemporary



Traditional



PROGRAMMABLE ELECTRIC SALON TOP • ELECTRA-GLIDE™ LIFT ACTUATORS • POWERPORT™ OUTLETS • ERGONOMIC HAND & FOOT CONTROLS • STRATA™ MEMORY FOAM SYSTEM • NATURSOFT™ UPHOLSTERY • HOT TOWEL CABI READY CABINETS



Specifications

- Width Options: 30", 32" (76, 81 cm)
- Length: 73" (185 cm)
- Height Range: 25" - 37" (67 - 95 cm)
- Recommended Lift Capacity: 625 lbs (283 kg)

Table Power

- 110V / 220V available
- International plug options



NUAGE

ALL ELECTRIC MULTI-PURPOSE TABLE

The Nuage™ features the industry's only programmable, all electric lift actuators with soft start, soft stop technology. LEC's master craftsmen hand upholster these tables with LEC's top-of-the-line proprietary Strata™ memory foam cushioning and supple Natursoft™ upholstery. Choose from a variety of hardwood cabinet styles, modern pedestal finishes and upholstery choices to complement the finest decors. LEC's Nuage collection also sports a full line of technological enhancement options to improve operational efficiency and client comfort.

FEATURES

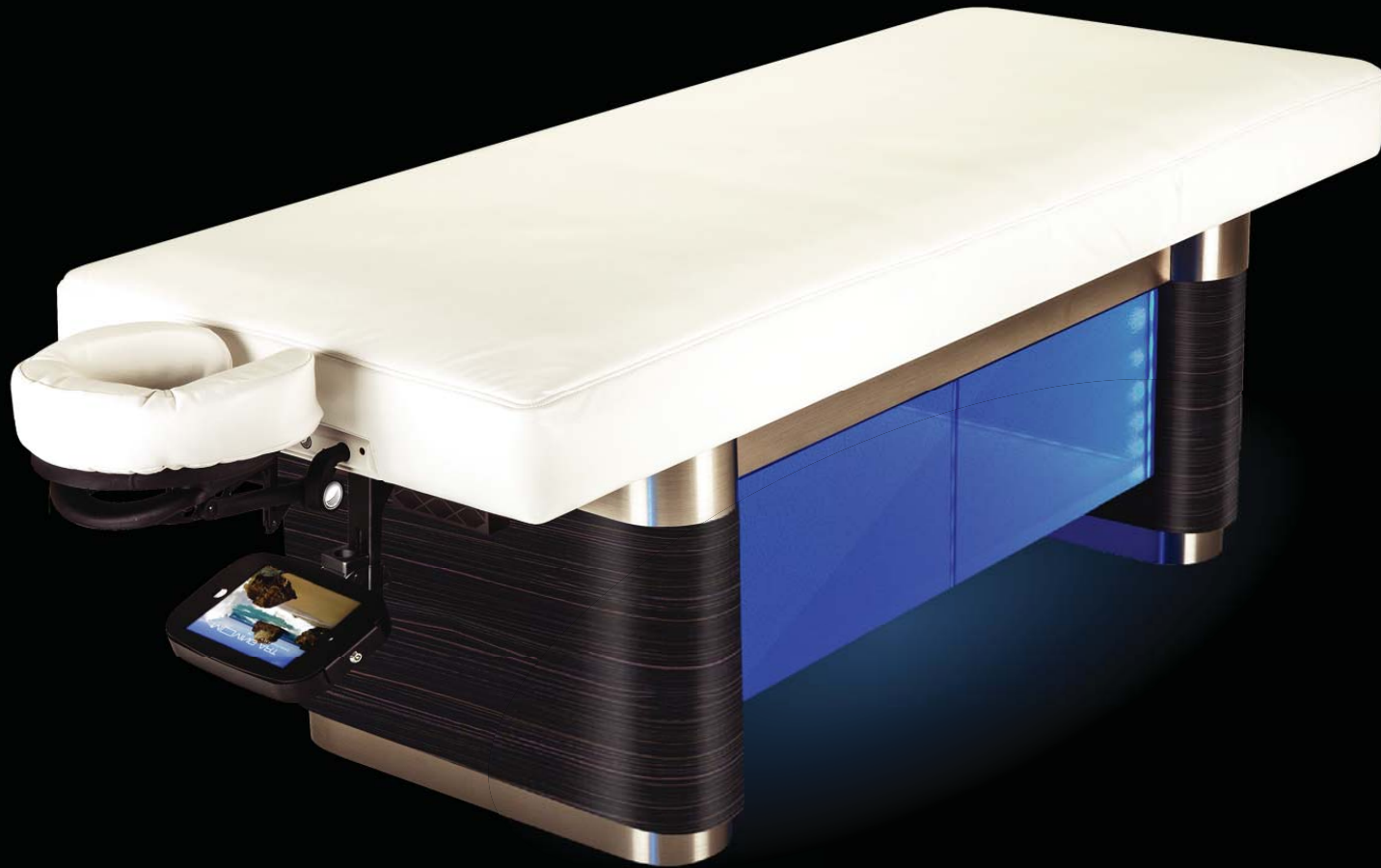
- Programmable electric salon top
- Ultra-stable cross braced steel frame
- Whisper-silent Electra-Glide™ lift actuators
- Programmable hand and foot control
- Strata™ 4" memory foam cushioning system
- Premium Natursoft™ upholstery
- PowerPort™ management system
- Neck roll

OPTIONS

- Flex arms or PivotPerfect™ side arms
- Aromatherapy platform & Arm shelf
- Klipsch® Audio Sytem
- So Sound® acoustic resonance therapy
- Hot towel cabi
- Custom wood stains & upholstery
- Caress™/Flex-Rest™ self adjusting platform with Strata™ FacePillow
- Massage flat top
- Conforma™ top

NUAGE VECTOR +STUDIO

SMART • VERSATILE • LUX



Tablet with
relaxing videos



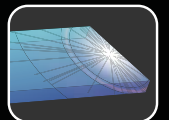
+Studio Finishes



Bluetooth



Custom Audio



IceBlock™

PROGRAMMABLE ELECTRIC SALON TOP • STRATA™ MEMORY FOAM SYSTEM • EMBEDDED TABLE WARMER • PREMIUM PROMESSA®
UPHOLSTERY • LED CHROMA LIGHTING (16 COLORS) • +STUDIO FINISHES • TIES SYSTEM



Table Dimensions

- Width Options: 30", 32" (76, 81 cm)
- Length: 73" (185 cm)
- Height Range: 25" - 37" (63.5 - 94 cm)
- Recommended Lift Capacity: 650 lbs (295 kg)

Table Power

- 110V / 220V available
- International plug options
-  listed motors & controls

NUAGE VECTOR

MIND BODY EXPERIENCE

With the most advanced healing and relaxation technology available today, the striking Nuage Vector's™ +Studio Total Immersion System™ touches guests' every sense. This completely programmable all electric salon table is a technological miracle. Soothing chromatherapy lighting, embedded digital table warmer, acoustic resonance, embedded Bluetooth® stereo speakers, tablet with meditative nature journeys.

FEATURES

- Programmable all electric salon top
- Strata™ 3" memory foam system
- Premium brushed aluminum trim
- UltraLeather® or Promessa® upholstery
- Embedded table warmer
- LED lit IceBlock™ shelf (16 colors)
- Premium laminate options

+STUDIO OPTION

- TIES™ System (Total Immersion Experience System)
- Tablet with nature-themed visual meditation journeys
- Klipsch® Audio System
- So Sound® acoustic resonance therapy
- IceBlock™ cabinet
- Aromatherapy well



Nuage Vector +Studio shown

NUAGE PEDESTAL +STUDIO

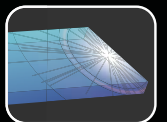
CONTEMPORARY • DISTINCTIVE • FUNCTIONAL



+Studio Finishes

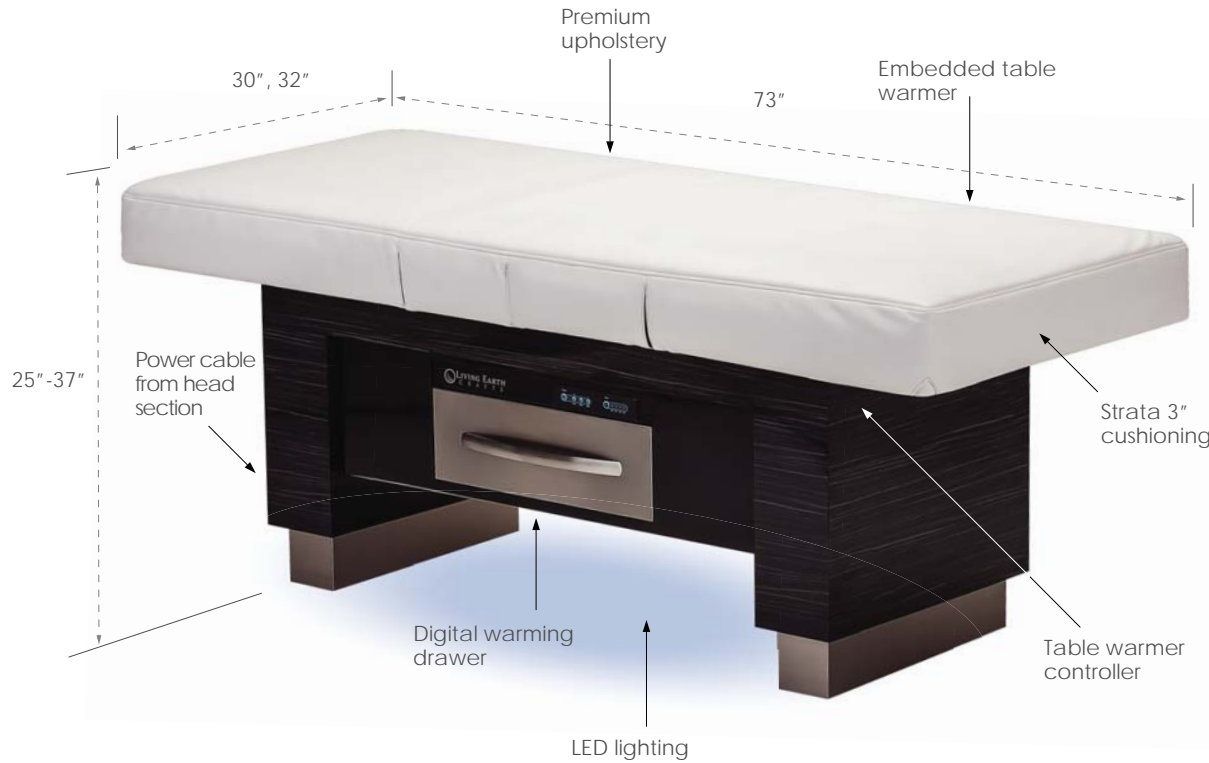


Digital
Warming Drawer



LED Lighting

PROGRAMMABLE ELECTRIC SALON TOP • DIGITAL WARMING DRAWER • STRATA™ MEMORY FOAM SYSTEM • PREMIUM PROMESSA®
UPHOLSTERY • EMBEDDED TABLE WARMER • BRUSHED ALUMINUM & PREMIUM LAMINATE FINISHES • LED ACCENT LIGHTING



Specifications

- Width options: 30", 32" (76 cm, 81cm)
- Length: 73" (185 cm)
- Height Range: 25" - 37" (63.5 cm - 94 cm)
- Recommended Lift Capacity: 625 lbs (283 kg)

Table Power

- 110V / 220V available
- International plug options

 listed motors & controls

NUAGE PEDESTAL +STUDIO

SLEEK, SEXY & ULTRA-RELIABLE

Transform your treatment room with the incomparable Nuage™ Pedestal +Studio. The industry's smoothest, quietest electric lift actuator powers this modern treatment table. A vast array of comfort and aesthetic innovations from the world's finest treatment table manufacturer makes the Nuage experience both stunning to the eye and luxurious to the touch.

FEATURES

- Programmable electric salon top
- Strata™ 3" memory foam cushioning
- Premium Ultraleather® or Promessa® upholstery
- Digital warming drawer
- Embedded table warmer
- Pedestal design
- Brushed aluminum trim
- Ultra-smooth & quiet electric lift actuator
- Attractive square corners
- LED accent lighting
- +Studio finishes

OPTIONS

- Klipsch® Audio System
- So Sound® acoustic resonance therapy
- PivotPerfect™ side arms
- Caress™ /Flex-Rest™ self adjusting platform with Strata™ FacePillow



Overhead view of digital warming drawer

PRO SALON

PREMIUM ELECTRIC SPA TABLES



Cuvee



Traditional



Contemporary



Deluxe Classic

QUIETECH™ HYDRAULIC ACTUATORS • SMOOTH, STRONG, RELIABLE • STRATA™ MEMORY FOAM SYSTEM • HOT TOWEL CABI
READY • ARTICULATING SALON TOP • MAPLE HARDWOOD BASE • POWERPORT™ OUTLETS • LOW HEIGHT OPTION



Specifications

- Width Options: 28", 30", 32" (71, 76, 81 cm)
- Length: 73" (185 cm)
- Height Range: 25" - 37" (67- 95 cm)
- Low Height Range: 22.75" - 31.75" (57- 81 cm)
- Recommended Lift Capacity: 650 Lbs (295 kg)

Table Power

- 110V / 220V available
- International plug options

UL listed option | CE

PRO SALON

PREMIUM ELECTRIC SPA TABLES

The famously versatile choice of five-star resorts and spas worldwide, the flagship Pro Salon™ tables accommodate a wide range of treatments from facials to bodywork. Chosen for their ultra-reliable, soundproofed Quietech™ actuators and stylish handcrafted cabinet options, the Pro Salon tables come standard with an array of premium features not found anywhere else.

FEATURES

- Quietech™ hydraulic actuators
- Fully articulating electric salon top
- Tight tolerances for exceptional stability
- Strata™ 4" memory foam system
- Handcrafted hardwood cabinet styles
- Neck roll
- PowerPort™ outlets
- Ergonomic hand and foot controls

OPTIONS

- Embedded table warmer
- Digital warming drawer
- Klipsch® Audio System
- So Sound® acoustic resonance therapy
- Conforma™ top or Conforma™ Pregnancy top
- Square corners
- PivotPerfect™ side arms or Flex arms
- Flex arms
- LED Chroma lighting (16 colors)



PRO SALON WRIGHT-WOOD™

MULTIPURPOSE TREATMENT TABLE



GENEROUS HARDWOOD CABINET DESIGN • WHISPER-QUIET QUIETECH II™ HYDRAULICS • 1,000 LB LIFT CAPACITY • BESPOKE FINISHES
CONFIGURABLE • STRATA™ GT™ SPAMATTRESS • THERMASOFT™ DUAL-ZONE EMBEDDED TABLE WARMER* • USB AROMATHERAPY DIFFUSER*
(*OPTIONAL)

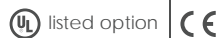


Specifications

- Width Options: 28", 30", 32" (71, 76, 81 cm)
- Length: 73" (185 cm)
- Height Range: 25" - 37" (67- 95 cm)
- Low Height Range: 22.75" - 31.75" (57- 81 cm)
- Recommended Lift Capacity: 650 Lbs (295 kg)

Table Power

- 110V / 220V available
- International plug options



PRO SALON WRIGHT-WOOD

MULTIPURPOSE TREATMENT TABLE

The famously versatile choice of five-star resorts and spas worldwide, the flagship Pro Salon™ tables accommodate a wide range of treatments from facials to bodywork. Chosen for their ultra-reliable, soundproofed Quietech II™ actuators and stylish handcrafted cabinet options, the Pro Salon tables come standard with an array of premium features not found anywhere else.

FEATURES

- Quietech II™ hydraulic actuators
- Fully articulating electric salon top
- Tight tolerances for exceptional stability
- Strata™ 4" memory foam system
- Handcrafted hardwood cabinet
- Neck roll
- PowerPort™ outlets
- Square corners
- Soft-touch adjustment levers

OPTIONS

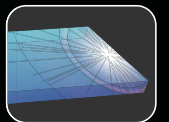
- Thermasoft™ Dual-Zone embedded table warmer
- Klipsch® Audio System
- So Sound® acoustic resonance therapy
- Conforma LE™ top
- PivotPerfect™ side arms
- LED Chroma lighting (16 colors)
- USB Aromatherapy diffuser

PRO SALON KENSINGTON +STUDIO

SOPHISTICATED • LUXURIOUS • ELEGANT



Digital
Warming Drawer



LED Lighting

STRATA™ 6" CUSHIONING • EMBEDDED TABLE WARMER • QUIETECH™ HYDRAULIC LIFT • ELECTRIC SALON TOP • DIGITAL WARMING
DRAWER • HARDWOOD CABINET BASE • PREMIUM UPHOLSTERY • CHOICE OF FINISH • LED CHROMA LIGHTING



Kensington™ +Studio with digital warming drawer

Specifications

- Width Options: 28", 30", 32" (71 cm, 76 cm, 81 cm)
- Length: 73" (185 cm)
- Height Range: 26.25" - 37.5" (67 cm - 95 cm)
- Recommended Lift Capacity: 650 lbs (295 kg)

Table Power

- 110V / 220V available
- International voltage options

UL listed motors & controls | CE pending

PRO SALON KENSINGTON™ MULTI-PURPOSE HYDRAULIC TREATMENT TABLE

Discover our most luxurious table, the Kensington™, featuring our 6" Strata™ foam system, Quietech™ lift system, and an embedded table warmer. The Kensington is available with +Studio options including LED Chroma Lighting and digital warming drawer.

FEATURES

- Quietech™ Hydraulic System
- 6" Strata™ memory foam cushioning system
- Embedded table warmer
- Square corners
- Attractive hardwood cabinet
- Generous storage
- PowerPort™ outlets
- Stains and lacquers

OPTIONS

- Aromatherapy platform & Arm shelf
- Massage flat top
- PivotPerfect™ side arms
- Caress™/Flex-Rest™ self-adjusting platform with Strata™ FacePillow

+STUDIO OPTIONS

- Klipsch® Audio System
- Digital warming drawer
- LED Chroma Lighting



Digital warming drawer standard on +Studio version

PRO SALON VALENCIA

PREMIUM ELECTRIC SPA TABLES



QUIETECH™ HYDRAULIC ACTUATORS • SMOOTH, STRONG, RELIABLE • STRATA™ MEMORY FOAM SYSTEM • HOT TOWEL CABI READY
• ARTICULATING SALON TOP • MAPLE HARDWOOD BASE • POWERPORT™ OUTLETS • LOW HEIGHT OPTION



Specifications

- Width Options: 30", 32" (76, 81 cm)
- Length: 84.5" (185 cm)
- Height Range: 25" - 37" (67- 95 cm)
- Recommended Lift Capacity: 650 Lbs (295 kg)

Table Power

- 110V / 220V available
- International plug options

UL listed option | CE

PRO SALON VALENCIA

PREMIUM ELECTRIC SPA TABLES

The unique Pro Salon Valencia maximizes client comfort and healing through an innovative system offering easy electronic armrest adjustments to lengthen the spine and stretch shoulder and neck muscles. Meanwhile, LEC's patented embedded Caress™ Facecradle system allows for optimal head and neck positioning, reducing spinal compression and neck discomfort during massage. Packaged in a timeless hardwood cabinet with all the multifunctional spa features of the renowned Pro Salon, the Valencia represents the leading edge of therapy treatment tables. Built to order in the LEC factory in Vista, California.

FEATURES

- Motorized electronic droparms
- Caress embedded platform
- Quietech™ hydraulic actuators
- Fully articulating electric salon top
- Tight tolerances for exceptional stability
- Strata™ 4" memory foam system
- Handcrafted hardwood cabinet styles
- Facehole plug
- Ergonomic hand and foot controls

OPTIONS

- Embedded table warmer
- Digital warming drawer
- Klipsch® Audio System
- LED Chroma lighting (16 colors)
- Custom stain
- Ultraleather® upholstery

SERENITY

PRACTICAL • ELEGANT • VERSATILE



QUIETECH™ HYDRAULIC LIFT ACTUATORS • HARDWOOD FRAME • SHELF BASE • CABINET OPTIONS • ELECTRONIC FOOT CONTROL • DELUXE CUSHIONING SYSTEM

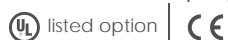


Specifications

- Width Options: 28", 30", 32" (71 cm, 76 cm, 81 cm)
- Length: 73" (185 cm)
- Height Range: 25" - 37" (64 cm - 94 cm)
- Optional Low Height Range: 22" - 31" (57 cm - 79 cm)
- Recommended Lift Capacity: 650 lbs (295 kg)

Table Power

- 110V / 220V available
- International plug options



SERENITY

MULTI-PURPOSE HYDRAULIC TREATMENT TABLE

The versatile and practical Serenity allows you to easily transition between massage, facial and a variety of other spa treatments. Dollar for dollar, it's one of the best values in the industry.

FEATURES

- Quietech™ electric hydraulic lift system
- Plush 3-layer, Deluxe Salon 3.5" cushioning system
- Natursoft™ Upholstery (14 color options)
- Electronic foot control
- Shelf base
- Massage flat top

OPTIONS

- PowerAssist™ Pneumatic Salon & Tilt Top
- Manual tilt
- Low height
- Trestle base
- Stained cabinetry options
- PowerPort™ outlets
- Conforma™ & Conforma™ Pregnancy top
- Strata™ memory foam system
- Flex arms or PivotPerfect™ side arms
- Klipsch® Audio System
- So Sound® acoustic resonance therapy



Shown with flat top, optional Deluxe Classic cabinet and American Walnut stain

ASPEN

CLASSIC • DUAL PEDESTAL



SOLID MAPLE BASE • DUAL COLUMN ELECTRIC LIFTS • FULLY ARTICULATING SALON TOP • STRATA™ MEMORY FOAM SYSTEM •
ERGONOMIC HAND CONTROL • TRENDLENBURG TILT



Specifications

- Width Options: 28", 30", 32" (71 cm, 76 cm, 81 cm)
- Length: 73" (185 cm)
- Height Range: 25" - 35", (64 cm - 89 cm)
- Recommended Lift Capacity: 625 lbs (283 kg)

Table Power

- 110V / 220V available
- International plug options

UL listed motors & controls | CE

ASPEN

DUAL PEDESTAL TREATMENT TABLE

Create a stunning impression inside the treatment room with the beautifully designed Aspen. Its stylish solid maple design provides exceptional strength with impeccable style.

FEATURES

- Ergonomic hand control
- Fully-articulating, electric salon top
- Plush Strata™ 4" memory foam system
- Premium Natursoft™ upholstery
- Neck roll

OPTIONS

- Conforma™ top
- Massage flat top
- PivotPerfect™ side arms
- Flex arms
- Aromatherapy platform and Arm shelf
- Stains and Lacquers
- Foot control
- Locking casters



Aspen massage flat shown in White Lacquer finish

ASPEN GT™
MULTIPURPOSE TREATMENT TABLE
ULTRALUX • MODERN • RELIABLE



STRATA GT™ SPAMATTRESS SYSTEM WITH GELTECH™ • HARDWOOD DESIGNER BASE
DUAL COLUMN ELECTRIC LIFTS • FULLY ARTICULATING SALON TOP • ERGONOMIC HAND CONTROL • TRENDLENBURG TILT



Specifications

- Width Options: 30", 32" (76 cm, 81 cm)
- Length: 73" (185 cm)
- Height Range: 23.5"- 39.5", (60 cm - 100 cm)
- Recommended Lift Capacity: up to 625 lbs (283 kg)

Table Power

- 110V / 220V available
- International plug options

UL listed motors & controls | CE

ASPEN GT™ MULTIPURPOSE TREATMENT TABLE

The Aspen GT™, the supercharged version of the classic Aspen multipurpose treatment table, features a removable Strata GT™ SpaMattress with a proprietary GelTech™ layer providing the perfect balance between softness and response. The Strata GT™ offers an extended height range with unsurpassed client comfort on a stylish modern dual pedestal base.

FEATURES

- Programmable, all electric salon top
- Removable Strata GT™ 5.5" SpaMattress with GelTech™
- Sleek, milled hardwood base
- Dual hand and foot controls for easy client positioning
- Hand-upholstered in eco-friendly Natursoft™ fabric (14 color options)

OPTIONS

- Sound system
- Ultraleather® premium upholstery
- Custom stains and lacquers
- Locking casters
- Flat massage top
- Premium Ultraleather® upholstery



Aspen GT has independent electric lift actuators for Trendelenburg positioning

PEDESTAL

ALL-ELECTRIC MULTI-PURPOSE TABLE



SMOOTH & SUBTLE ELECTRIC LIFT ACTUATOR • TRIPLE DENSITY DELUXE CUSHIONING SYSTEM • DURABLE
NATURSOFT™ UPHOLSTERY • SINGLE PEDESTAL DESIGN • HARD MAPLE TRIM



Rectangle Dimensions

- Width Options: 28", 30", 32" (33", 35")
(71 cm, 76 cm, 81 cm) (84 cm, 89 cm)
- Length: 73" (185 cm)
- Height Range: 25" - 37" (64 cm - 94 cm)
- Recommended Lift Capacity: 600 lbs (295 kg)

Oval Dimensions

- Widest Point: 32" (81 cm)
- Length: 77" (195.5 cm)
- Height Range: 25" - 37" (64 cm - 94 cm)
- Recommended Lift Capacity: 600 lbs (295 kg)

Table Power

- 110V / 220V available
- International plug options



PEDESTAL

ALL ELECTRIC MULTI-PURPOSE TABLE

Elegant in its simplicity, the Pedestal offers a striking presence with incredible comfort.

FEATURES

- Reliable UL approved motor
- Rectangle top with square corners
- Heavy duty foot control
- 3.5" Deluxe Salon cushioning
- Natursoft™ upholstery (14 colors)
- Heavy duty steel frame
- Hardwood Maple trim

OPTIONS

- PowerAssist™ pneumatic salon top (rectangle only)
- PowerAssist™ pneumatic tilt top
- Manual tilt back
- Additional foot pedal
- Custom wood stain & upholstery
- Embedded FacePillow & platform
- Flex arms, neck roll & salon headrest

NAPA

MULTI-PURPOSE MANUAL HYDRAULIC TREATMENT TABLE



NON-ELECTRIC • MANUAL HYDRAULIC LIFT • ULTRA-QUIET HEIGHT ADJUSTMENT • FOLD-AWAY
HANDLE • HARDWOOD CONSTRUCTION • SHELF BASE



Specifications

- Width Options: 28", 30", 32" (71, 76, 81 cm)
- Length: 73" (185 cm), (79") (200 cm)
- Height Range: 25" - 37" (64 cm - 94 cm)
- Low Height Range: 22" - 31" (57 cm - 79 cm)
- Recommended Lift Capacity: 500 lbs (227 kg)

Internal Shelf Dimensions

- Width: 20" (50 cm)
- Length: 50" (127 cm)
- Height: 12" (30 cm)

NAPA

MANUAL HYDRAULIC TREATMENT TABLE

The Napa spa treatment table enables resorts to offer a full range of spa services virtually anywhere where power is not readily available. The non-electric Napa takes your full service menu past the limits of the power lines.

FEATURES

- Quietech™ manual hydraulic lift system
- Massage flat top
- Deluxe 3.5" Salon cushioning
- Natursoft™ upholstery
- Shelf base
- No electricity needed

OPTIONS

- PowerAssist™ pneumatic salon top
- PowerAssist™ pneumatic tilt top
- Manual back tilt
- Flex arms
- Trestle base
- Cabinet base
- Low height range
- Custom wood stains & upholstery
- Caress™/Flex-Rest™ self adjusting platform with Strata™ FacePillow
- Aromatherapy platform and Arm shelf



Shown with optional flex arms,
neck roll and salon headrest

SONOMA

HARDWOOD STATIONARY TREATMENT TABLE



HARDWOOD MAPLE FRAME • EASILY ADJUSTABLE LEGS • DURABLE NATURSOFT™ UPHOLSTERY • 3.5" DELUXE CUSHIONING • SALON TOP OPTION • STAIN OPTIONS • CABINET OPTIONS



Specifications

- Width Options: 28", 30", 32" (71 cm, 76 cm, 81cm)
- Length: 73" (185 cm)
- Height Range: 24" - 33" (61 - 84 cm)
- Recommended Lift Capacity: 800 lbs (363 kg)

SONOMA

HARDWOOD STATIONARY TREATMENT TABLE

A favorite of day spas, health clubs, and private practitioners, the durable yet functional Sonoma is a cost-effective solution for any treatment table need.

FEATURES

- Rigid hardwood Maple frame
- Massage flat top
- 3.5" Deluxe Salon cushioning
- Natursoft™ upholstery (14 colors)
- Trestle or Shelf base

OPTIONS

- PowerAssist™ pneumatic facial top
- PowerAssist™ pneumatic salon top
- Manual tilt
- Cabinet base
- Custom wood stains and upholstery
- Caress™/Flex-Rest™ self adjusting platforms with Strata™ FacePillow
- Aromatherapy platform and arm shelf
- Strata™ memory foam cushioning system



Shown with flat top & shelf base

SOHO ALL-IN-ONE

MULTI-PURPOSE • MEDI-SPA CHAIR



POWERFUL SINGLE COLUMN ELECTRIC LIFT • FULLY ARTICULATING PROGRAMMABLE ELECTRIC TOP • ERGONOMIC HAND CONTROL • LUXURIOUS STRATA™ MEMORY FOAM SYSTEM • DESIGNER STAINS AND FINISHES • PREMIUM PROMESSA® UPHOLSTERY



Trendelenburg



Drop leg for sitting position

Specifications

- Width Options: 26", 28", 30" (66 cm, 71 cm, 76 cm)
- Length: 73" (185 cm)
- Height Range: 25" - 36" (63 cm - 91 cm)
- Recommended Lift Capacity: 625 lbs (283 kg)

Chair Power

- 110V / 220V available
- International plug options

UL listed motors & controls | CE

SOHO ALL IN ONE MULTI-PURPOSE MEDI-SPA CHAIR

Spa meets medical in this procedure chair with all the comfort of a luxury table. Swiss-made motors, hand crafted base, and medical grade upholstery. Functional excellence. Luxury beyond compare.

FEATURES

- UL listed, Swiss-made motors and controls
- Cuvee base
- Zero gravity
- Deluxe Strata™ memory foam system
- Medical grade Promessa® or UltraLeather® upholstery
- Chair to table positioning
- Designer wood stains
- PivotPerfect™ side arms
- Programmable controls with two presets

OPTIONS

- Swivel with 180° rotation
- Hands-free foot control
- Seamless Procedure top
- Extended height range
- Roman Bronze or Dark Sheffield acrylic bases



Shown with optional Espresso stain

CLOUD 9

ALL-IN-ONE TREATMENT TABLE



POWERFUL SINGLE COLUMN LIFT ACTUATOR • FULLY ELECTRIC SALON TOP • ERGONOMIC HAND & FOOT CONTROLS • LUXURIOUS STRATA™ MEMORY FOAM SYSTEM • ADA COMPLIANT OPTION • MANI/PEDI CAPABLE • PERFECT FOR MEDICAL SPA



Specifications

- Width Options: 26", 28", 30", 32"
(66 cm, 71 cm, 76 cm, 81 cm)
- Length: 73" (185 cm)
- Height Range: 24" - 36" (61 cm - 91 cm)
- Expanded Height Range: 20" - 37" (51 cm - 94 cm)
- Recommended Lift Capacity: 500 lbs

Table Power

- 110V / 220V available
- International plug options



CLOUD 9

ALL-IN-ONE TREATMENT TABLE

Perfect for massage, facials, injectables, pedicures, manicures, body and medical spa treatment options. The Cloud 9 is designed for the very real needs of the hands on, evolving spa.

FEATURES

- Single column electric lift actuator
- Fully articulating electric salon top
- Strata™ 4" memory foam system
- Sturdy Steel frame
- Articulates to upright sitting position
- PivotPerfect™ side arms
- Neck roll
- Salon headrest

OPTIONS

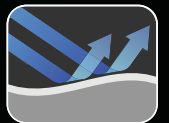
- Flex arms
- PivotPerfect™ side arms with manicure dishes
- Cuvee base
- Expanded height 20" - 37" (ADA compliant)
- Hands free foot control
- Conforma™ top
- Caress™ /Flex-Rest™ self adjusting platform with Strata™ FacePillow
- SaniJet® pipeless portable foot bath



Shown in metal base with optional Flex arms

TIDES LA MER +STUDIO

PRACTICAL • SLEEK • LUXURIOUS • WET/DRY TABLE

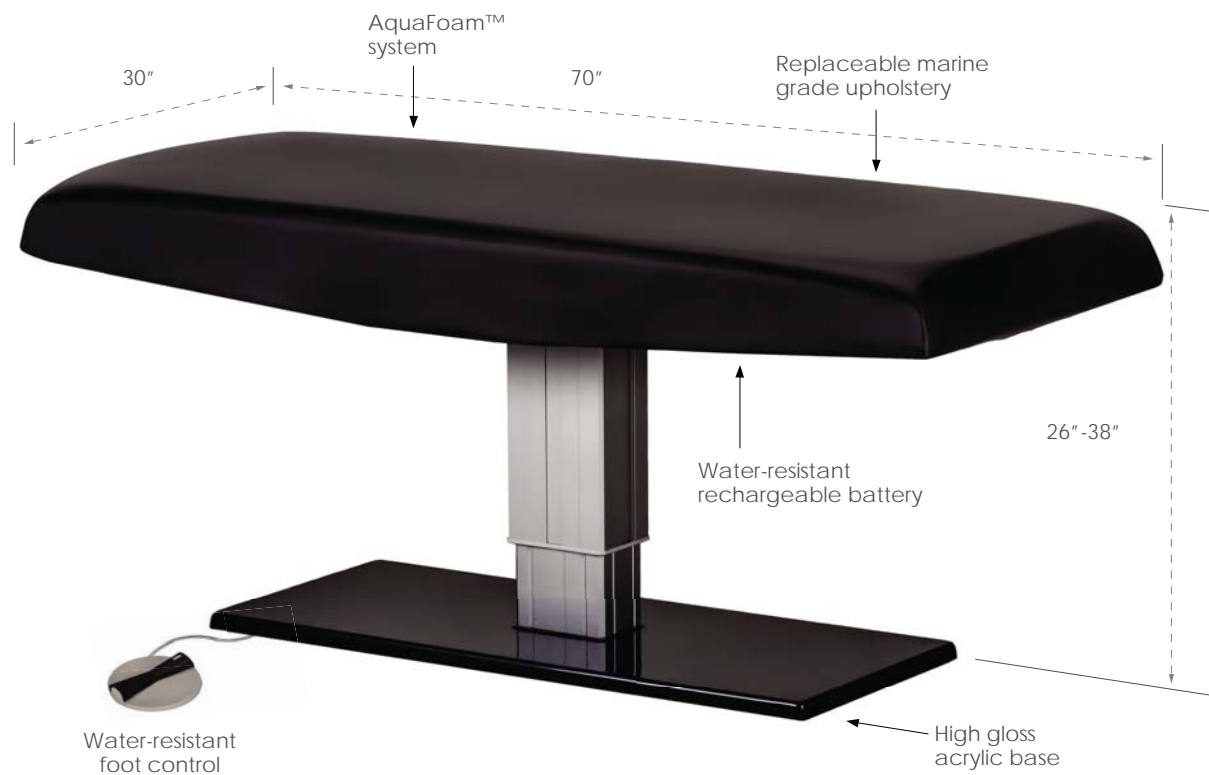


Water Resistant



Battery Operated

TIDES AQUAFOAM™ SYSTEM • MARINE GRADE UPHOLSTERY • BATTERY OPERATED LIFT COLUMN • WATER-RESISTANT
FOOT CONTROL • REPLACEABLE CUSHION • ACRYLIC BASE



Specifications

- Width: 30" (76 cm)
- Length: 70" (178 cm)
- Height Range: 26" - 38" (63 - 94 cm)
- Recommended Lift Capacity: 600 lbs (272 kg)

Power

- Removeable, rechargeable, water-resistant battery system
- Water-resistant foot control
- Includes wall charger and (2) batteries

UL listed motors & controls | CE pending

TIDES LA MER WET TABLE

PRACTICAL • SLEEK • LUXURIOUS

The Tides La Mer is the perfect wet/dry solution for discerning spas. Perfect for vichy as well as traditional massage. With a stunning modern aesthetic, marine grade upholstery, and a battery operated electric lift, the Tides La Mer offers function, comfort, and style.

FEATURES

- Pedestal lift with stunning, modern aesthetic
- Marine grade, water-resistant upholstery
- Proprietary AquaFoam™ system
- High gloss acrylic base
- Water-resistant foot pedal
- Perfect for wet treatments, massage or wraps
- Battery operated electric lift actuator
- Wall charging unit and spare battery included

OPTIONS

- Wet bolster
- Flex-Rest™ platform
- Roman Bronze or Dark Sheffield acrylic bases



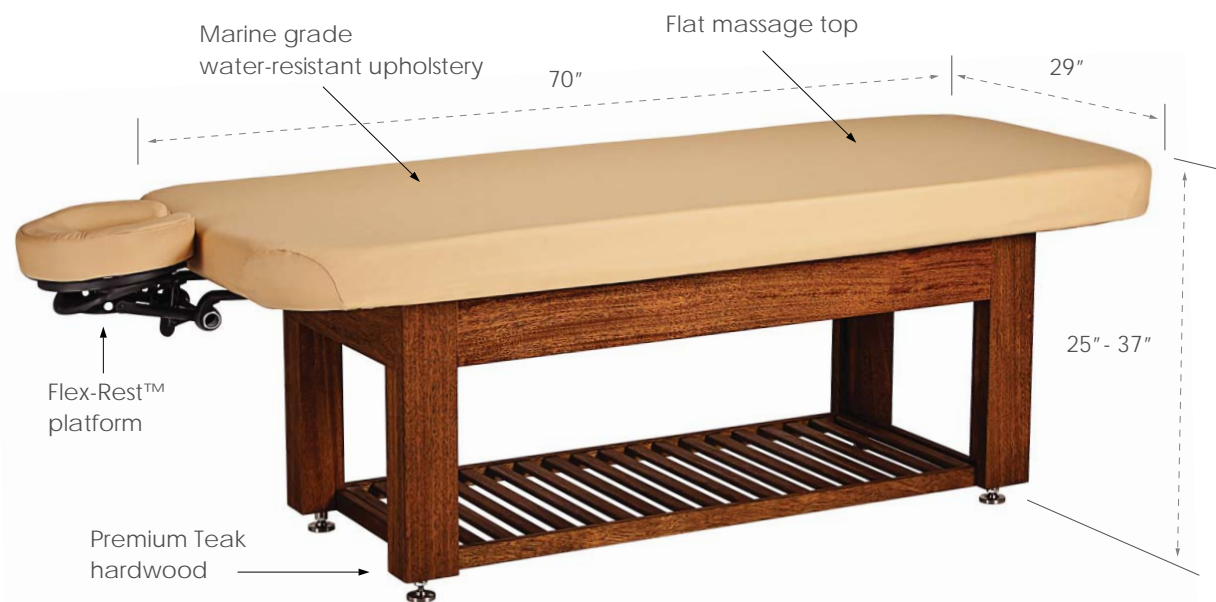
Shown with Graphite Grey upholstery and Dark Sheffield base

NAPA LA MER

MANUAL HYDRAULIC LIFT • WET ROOM • OUTDOOR TREATMENT TABLE



PREMIUM TEAK HARDWOOD • MANUAL HYDRAULIC LIFT SYSTEM • MARINE GRADE UPHOLSTERY
• STAINLESS STEEL HARDWARE • FLAT MASSAGE TOP



Specifications

- Width: 29" (74 cm)
- Length: 70" (178 cm)
- Height Range: 25"- 37" (7 cm - 94 cm)
- Recommended Lift Capacity: 500 lbs (227 kg)

NAPA LA MER

WET ROOM/OUTDOOR TREATMENT TABLE

The Napa La Mer™ offers a practical combination of wet room functionality; including wraps, scrubs, and vichy shower, as well as massage and bodywork, all on one comfortable cushioned table top. Also suited for open air environments.

FEATURES

- Solid Teak hardwood frame
- Manual hydraulic lift system
- Premium marine grade Aquafoam™
- Massage flat top
- Marine grade water-resistant upholstery
- Stainless steel hardware

OPTIONS

- Wet bolster
- Caress™ or Flex-Rest™ platform
- Splash Drape



ZG DREAM™ LOUNGER

RECLINER & EXPRESS TREATMENT CHAIR



HAND FINISHED HARDWOOD FRAME • ULTRA-SOFT STRATA™ CUSHIONS • NATURE'S TOUCH™ UPHOLSTERY • WHISPER QUIET UL MOTORS
INTEGRATED RELAXOR® HEAT & MASSAGE OPTION • ORBITAL™ ELECTRONIC ZERO GRAVITY ADJUSTMENTS • COMMERCIAL GRADE



Dimensions:

- Width: 33" (84 cm)
- Height, upright: 48" (122 cm)
- Length, fully reclined: 63" (160 cm)
- Length, upright: 54" (137 cm)

Electrical

- Available in international voltages
- Power: 6 watts (with heat/massage)
- Limited lifetime warranty on frame, three years on foam & upholstery, two years on motors & controls

CE pending



Variable zero gravity positioning for ultimate stress relief

ZG DREAM™ LOUNGER

RECLINER & EXPRESS TREATMENT CHAIR

The ZG DREAM™ LOUNGER fuses the scientifically proven relaxation benefits of zero gravity positioning with L-E-C's world renowned custom built craftsmanship. Your clients will experience life changing spinal decompression and muscle relaxation in the industry's most comfortable recliner. The convenient electronic control panel allows for easy zero gravity adjustments with smooth, whisper-quiet motors.

FEATURES

- Commercial grade, hand finished modern frame
- Variable zero gravity positioning for ultimate stress relief
- Luxurious Nature's Touch™ upholstered cushions, filled with plush Strata™ memory cushioning and Cloudfill™ Headpillow
- Convenient USB charging port
- Easy to use chair controls embedded in armrest
- Premium double needle stitching
- Soft start / soft stop whisper-quiet, UL-listed motors
- Stain / lacquer finish options

OPTIONS

- Pedicure roll-up bowl with removable footrest & splash guard
- Manicure side trays with optional cupholders
- Available in Promessa® and bespoke fabrics
- Comforting Relaxor® Heat/Massage option
- Replacement cushions



Optional pedi roll-up with removable foot rest enables easy access for pedicure capability



Optional removable manicure sidetrays



Chair Dimensions:

- Width: 33" (84 cm)
- Height, upright: 48" (122 cm)
- Length, fully reclined: 63" (160 cm)
- Length, upright: 54" (137 cm)

Roll-up Bowl Dimensions:

- Bowl Diameter: 20.5" (52 cm)
- Base Height: 7" (18 cm)
- Base to top of bowl: 15.5" (40 cm)

Electrical

- Available in international voltages
- Power: 6 watts (with heat/massage)
- Limited lifetime warranty on frame, three years on foam & upholstery, two years on motors & controls

CE pending



Variable zero gravity positioning
for ultimate stress relief

ZG DREAM™ LOUNGER WITH MANI/PEDI SERVICES

The ZG DREAM™ LOUNGER fuses the scientifically proven relaxation benefits of zero gravity positioning with L.E.C's world renowned custom built craftsmanship. Your clients will experience life changing spinal decompression and muscle relaxation in the industry's most comfortable recliner. The convenient electronic control panel allows for easy zero gravity adjustments with smooth, whisper-quiet motors.

The pedi roll-up is designed to enable amazing pedicure treatments. It is crafted from sustainable maple hardwood and securely holds a generously sized, hammered copper pedi-bowl. Quality locking casters hold the bowl in place during use and facilitate easy storage behind the chair. A padded footrest adds comfort, while an accompanying lid offers functionality.

FEATURES

- Commercial grade, hand finished modern frame
- Variable zero gravity positioning for ultimate stress relief
- Luxurious Nature's Touch™ upholstered cushions, filled with plush Strata™ memory cushioning and a Cloudfill™ Headpillow
- Pedicure roll-up bowl with removable footrest & splash guard
- Manicure side trays with optional cupholders
- Convenient USB charging port
- Easy to use chair controls embedded in armrest
- Premium double needle stitching
- Soft start / soft stop whisper-quiet, UL listed motors
- Stain / lacquer finish options

OPTIONS

- Available in Promessa® and bespoke fabrics
- Comforting Relaxor® Heat/Massage option
- Replacement cushions



Removable footrest enables easy
access for pedicure capability



Dimensions:

- Width: 33" (84 cm)
- Height, upright: 48" (122 cm)
- Length, fully reclined: 63" (160 cm)
- Length, upright: 54" (137 cm)

Electrical

- Available in international voltages
- Power: 6 watts (with heat/massage)
- Limited lifetime warranty on frame, three years on foam & upholstery, two years on motors & controls

CE pending



Variable zero gravity positioning
for ultimate stress relief

ZG DREAM™ LOUNGER

SALT ROOM EDITION

Designed specifically for salt rooms and corrosive environments, the Salt Room Edition of the ZG Dream™ Lounger fuses the scientifically proven relaxation benefits of zero gravity positioning with L•E•C's world renowned custom built craftsmanship. Your clients will experience life changing spinal decompression and muscle relaxation in the world's most comfortable recliner while enjoying the healing properties of salt room environments. The convenient electronic control panel allows for easy zero gravity chair adjustments with whisper quiet and smooth UL listed motors.

FEATURES

- Commercial grade, hand finished modern frame
- Variable zero gravity positioning for ultimate stress relief
- Marine grade Aqua™ upholstered cushions, filled with plush Strata™ memory cushioning and a Cloudfill™ Headpillow
- Premium double needle stitching
- Soft start-soft stop whisper quiet, UL listed motors
- Easy to use chair controls embedded in armrest
- 3 color selections:



Soft White



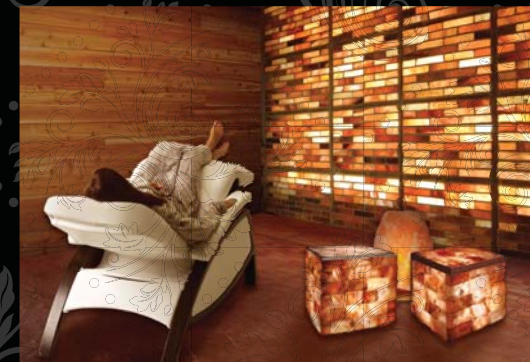
Stardust



Graphite

OPTIONS

- Available in other upholstery choices
- Comforting Relaxor® Heat/Massage option
- Refreshment side trays with optional cupholders
- Replacement cushions



WAVE LOUNGERS

ZERO GRAVITY RELAXATION FURNITURE



Glow Lounger



LED CHROMA LIT ICEBLOCK BASE (IN 16 COLORS) • PREMIUM LAMINATE OPTIONS • NATURSOFT™
UPHOLSTERY • LUXURIOUS STRATA™ MEMORY FOAM • ERGONOMIC ZERO GRAVITY DESIGN



Specifications

- Width: 31" (38 cm)
- Length: 73" (86 cm)
- Seat Height: 17" (42 cm)

Table Power

- 110V / 220V available
- International plug options

UL listed motors & controls | CE

WAVE LOUNGERS

ZERO GRAVITY LOUNGERS

Our Wave Lounger series features a sleek, zero gravity design with renowned Strata™ memory cushioning for the ultimate in style and comfort.

FEATURES

- Handcrafted hardwood bases
- LED Chroma lighting (Glow Lounger)
- Ergonomic and stylish zero gravity design
- Natursoft™ upholstery (14 colors)

OPTIONS

- Relaxor® heat and massage
- Klipsch® Audio System
- So Sound® acoustic resonance therapy
- LED dimmable reading lamp
- Neck roll
- LED accent lighting
- Custom wood stains and laminate finishes
- Premium Ultraleather® upholstery



Salt Room Edition available with corrosion resistant finishes

FUSIONLITE & FUSION +STUDIO

AVANT-GARDE • ULTRA-COMFORTABLE • INNOVATIVE



FUSIONLITE



FUSION +STUDIO



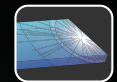
Tablet with
relaxing videos



+Studio Finishes



Custom Audio



LED Chroma

STATIONARY MASSAGE CHAIR • ELECTRONIC POSITIONING • HEATED SEAT/CHEST PADS • BACKLIT AVONITE™ ARMREST
MEDITATIVE NATURE JOURNEYS • LED CHROMA LIGHTING (16 COLORS) • +STUDIO SOUND
USB POWER PORT • INTERACTIVE TABLET • +STUDIO LAMINATE OPTIONS

FUSIONLITE



FUSIONLITE Specifications

- Armrest: width 31" (79 cm), depth 22" (56 cm)
- Chest: width 12" (30 cm), height 12" (30 cm)
- Seat: width 15" (38 cm), depth 13" (33 cm)
- Base: width 22" (56 cm), depth 34" (86 cm)

Chairs Power

- 110V / 220V available
- International plug options

UL listed motors & controls | CE pending

FUSION +STUDIO



FUSION +STUDIO Specifications

- Armrest: width 32" (81 cm), depth 22" (56 cm)
- Chest: width 12" (30 cm), height 12" (30 cm)
- Seat: width 15" (38 cm), depth 13" (33 cm)
- Base: width 24" (61 cm), depth 38" (97 cm)

Interactive Tablet
with relaxing videos



FUSIONLITE STATIONARY MASSAGE CHAIR

Great things come in small packages. The compact FusionLite stationary massage chair offers more mobility and a smaller footprint to the revolutionary Fusion design. The FusionLite incorporates the latest in time lapsed meditative nature journeys, chromatherapy, and electronic adjustability to dramatically intensify the relaxation experience. Combined with a healing hands of a trained therapist, your clients will achieve new levels of rejuvenation.

FUSION+STUDIO THE FUTURE OF CHAIR MASSAGE

The Fusion +Studio stationary massage chair makes a quantum leap in the chair massage experience. The Fusion incorporates the latest in meditative nature journeys, LED Chroma lighting, and electronic adjustability to dramatically intensify the relaxation experience.

FEATURES

- Infinitely adjustable – electronic seat and chest adjustments for perfect alignment
- Preset positions for ease of use
- Aromatherapy well to tap into deeper restive states
- Zenvi™ sound cushion for hi-fidelity music delivery
- IceBlock Chromatherapy armrest provides stunning 16 color ambience (FusionLite only)
- Ultraleather option (FusionLite only)

+Studio Features Only:

- Securely mounted, wi-fi enabled tablet-based control center for content and experience management
- Hi-Definition meditative nature journey videos to enhance and focus the relaxation experience
- Custom finished with choice of laminates and Promessa or Ultraleather upholstery
- Digital heated seat option
- Backlit Avonite™ armrest



Aspen caster shown

ROLLING LOCKING CASTERS

Rolling casters provide the perfect solution. Available on Cloud 9, Pro Salon, Aspen, Serenity. Contact LEC for use on other stationary tables.



HANDS FREE FOOT CONTROL

Med-Ped™ Hands Free Foot Control keeps hands sanitary for specialty work. Adjusts all table-top movements independently, including height adjustments. Available on Pro Salon, Aspen, Cloud 9.



STRATA™ PAD

2-Layer 2" Strata™ memory foam cushioning. Bounce-back layer within foam minimizes indentations and maintains a light, airy feel.



PAPER ROLL HANGER

This removable Paper Roll Hanger is designed with ease-of-use in mind. Holds 21" paper rolls. For use with all portable and stationary tables.



DIGITAL WARMING DRAWER

Is the perfect addition to select tables and trolleys, providing a multifunctional solution to spa treatment needs. This hand-built unit features variable preset heating for hot towels, warming stones, or robes and linens.



PIVOTPERFECT™ SIDE ARMS

PivotPerfect™ side arms pivot in close to client for a snug-in fit, or outward for hand/arm massage, filing and polish. Self-adjusting with angle of back tilt. Removable when not in use. With or without manicure dishes.



HOT TOWEL CABINET

UL Listed Hot Towel Cabi holds 24 heated towels at an easy hand's reach. Fits in Pro Salon, Nuage, and Serenity tables w/designer cabinet, & trolleys.



POWERPORT™ SYSTEM

Clever and practical, these recessed outlets eliminate cord clutter by allowing you to power additional equipment right from your table. Available in international voltages



LED CHROMA LIGHTING

A full color spectrum that gradually changes between hues, or stops on a single color of your choice.



AROMATHERAPY PLATFORM

Display an elegant array of herbs, flowers or essential oils. Adjustable, removable platform. Available on all LEC tables.



ARM SHELF

Sits underneath the facecradle with luxurious 4" foam and seconds as a table extender. Removable when not in use. Available on all LEC stationary tables.

TABLE OPTIONS

SPECIALIZED • CONVENIENT • ADD-ONS

Choose from a wide variety of treatment table accessories and equipment. Here you'll find anything from arm cradles to rolling casters for your tables.

CONFORMA™ TOP CUSHIONING

Provides added comfort for plus sized men and women. Multi-layer memory foam alcoves for the chest and stomach area relieve pressure and aid in spinal alignment. A convenient zipper releases the upholstery and unlocks the features of the Conforma Top's proprietary design. Available on most table models.

CONFORMA™ PREGNANCY TOP CUSHIONING

Is further enhanced with the additional features of a removable wood base and expandable mesh webbing to provide additional room for the expecting mother's tummy.





Inspirational nature-themed visual meditation journeys that will foster wellness and life balance while reducing the effect of "Nature Deficit Disorder" on our society.

TOTAL IMMERSION EXPERIENCE SYSTEM (T.I.E.S.™)
T.I.E.S.™ utilizes a mounted tablet to deliver incredible relaxation control to the client. The retractable platform also features an aroma-therapy well.



ZENVI™ SOUND CUSHION

Perfect solution for noisy treatment rooms. The Zenvi™ connects to iPods, phones and other portable audio players to immerse guests in the soothing effects of crystal-clear, high-fidelity sound vibrations, while blocking out all exterior spa noise. The Zenvi™ fits most headrest platforms and is rechargeable.



VISUALS & ACOUSTICS

SEE, HEAR & FEEL THE EXPERIENCE

Living Earth Crafts is proud to provide an entirely different dimension in audio and visual concepts within your treatment space. From the visual meditation journeys to our new partnership with Klipsch® Audio, we invite you to open your eyes and ears to an evolution of the spa experience.



KLIPSCH® SOUND SYSTEMS

Klipsch's world-class speakers and headphones allow people to connect with their favorite music like no other brand by delivering the power, detail and emotion of the live music experience.

Klipsch speakers possess a unique ability, with their unparalleled efficiency, low distortion and wide dynamic range. Klipsch has been impacting lives with vibrant, true audio for the better part of a century. They are the Keepers of the Sound. Bluetooth options available.



SO SOUND® ACOUSTIC RESONANCE THERAPY

The So Sound® system is a patented acoustic resonance therapy system. The hi-tech polycarbonate SoundHeart™ drivers provide a full spectrum flow of harmonic sound waves through the treatment table and into the client's body, to help achieve unprecedented levels of relaxation and recovery.

CLUB CHAIR LE™

COMPACT MANI/PEDI COMBO CHAIR



BUILT-TO-ORDER • ELECTRONIC ADJUSTMENTS • RETRACTABLE PEDI BOWL • SANIJET® PIPELESS TECHNOLOGY
RELAXOR® HEAT/MASSAGE • MANICURE TRAYS (OPTIONAL) • EXTENSIVE FABRIC/FINISH OPTIONS



Dimensions

- Chair Height: 50.25" (128 cm)
- Seat Height: 22" (56 cm)

Footprint Dimensions

- Tub retracted: 30.25" (77 cm)
- Tub extended: 57.5" (146 cm)
- Width: 31.5" (80 cm)
- Tilt: Allow 10" - 12" (25 cm - 31 cm) behind chair for back tilt / plumbing access

Electrical

- 110V/220V available
- International plug options
- Chair and tub = 7.9 Max Amps
- Relaxor® = 4 Max Amps
- Discharge Pump = 1.5 Max Amps



Versatile Mani/Pedi combo design with convenient tray storage

CLUB LE™

COMPACT MANI/PEDI CHAIR WITH RETRACTABLE FOOTBATH

The Club Chair LE™ is the industry's most compact luxury mani/pedi chair, featuring a retractable, motorized, fully plumbed pedicure bowl. The retracted footprint is similar to that of a standard armchair, it's an incredible space saver. The luxurious, bespoke Club LE™ is hand upholstered from a broad array of fabric selections and finishes. Electronic chair and bowl adjustments enable perfect client and technician ergonomics. The hidden pedicure unit features whisper quiet, reliable pipeless hydrotherapy, and is packed with practical features including a hand sprayer, power remote drain, and electronic footrest.

Features

- Retractable footbath
- Motorized bowl positioning
- Electronic footrest
- Reliable UL-listed motor
- Handy sprayer
- Electronic adjustments
- Power drain and flexible plumbing

Options

- Swingaway manicure sidetrays
- Relaxor® heat & massage
- Broad array of upholstery and finish selections



The retractable footbath allows for a compact, space-saving footprint to maximize space utilization

CONTOUR™ & CONTOUR™ LX PEDICURE CHAIRS

HAND CRAFTED • TIMELESS STYLE • ERGO DESIGN

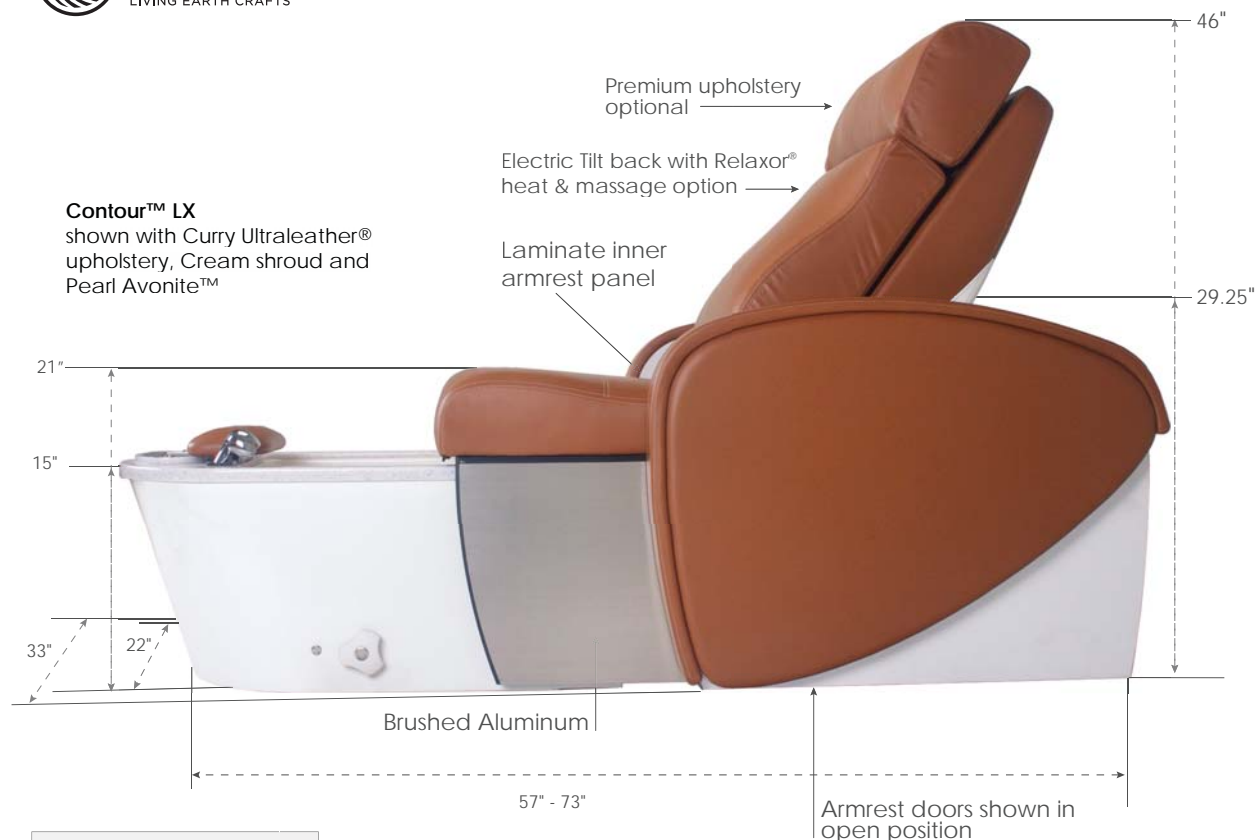


CONTOUR™



CONTOUR™ LX

SANIJET® PIPELESS HYDROTHERAPY • PREMIUM UPHOLSTERY • DESIGNER LAMINATES • CHROME FIXTURES
AVONITE™ TRIM • REFLEXOLOGY FOOTBED • OPTIONAL HEAT & MASSAGE • ADA COMPLIANT



The **Contour™ LX** model offers a modern design and unique upholstery combinations, Black and Sterling NaturSoft™ shown.

The back of the chair offers convenient storage for the side trays.

Tub and Shroud colors



Black Dark Silver Cream

Electrical

- 110V/220V available
- International plug options
- Chair and tub = Max Amps 4
- Relaxor +3 Max Amps
- Discharge Pump +1.5 Max Amps



pending



pending

CONTOUR™ LX & CONTOUR™ PEDICURE CHAIRS

The sweeping lines of the new Contour Pedicure Chair bring a glimpse of the past to the future of pedicure. Inspired by the retro furniture movement, our designers have created a mid-century silhouette with modern day technology. This timeless eye-catching pedicure chair brings an elegant mix of comfort and ergo style.

Features

- Patented Sanijet® pipeless hydrotherapy
- Reinforced fiberglass tub with reflexology nodes
- Fully motorized seat with retractable armrest doors
- Luxurious Strata™ seat cushioning
- Contrast double stitching
- Embedded control panel
- Milled solid surface Avonite®
- Commercial grade chrome plumbing fixtures
- Adjustable electric footrest
- Black, Dark Silver or Cream tub and shroud
- Power drain pump
- Eco-friendly Natursoft™ upholstery (14 color options)

Options

- ADA compliant option
- Upgraded Avonite™ surface options
- Relaxor® heat & massage
- Wide variety of upholstery and laminate color combinations



Reinforced fiberglass footbath
with reflexology nodes

Pedicure Dimensions

- Height: 46" (117 cm)
- Width: 33" (84 cm)
- Seat Height: 21" (53 cm)

Footprint Dimensions

- Closed armrest doors : 57" (145 cm)
- Open armrest doors: 73" (185 cm)
- Width: 33" (84 cm)

CLUB CHAIR V2

PIPELESS • MODERN • EXQUISITE



+Studio Finishes

SANIJET® PIPELESS HYDROTHERAPY • ULTRALEATHER® UPHOLSTERY • PREMIUM DESIGNER LAMINATES * CHROME FIXTURES • DURABLE FIBERGLASS TUB WITH AVONITE™ TRIM • COMMERCIAL DRAIN • OPTIONAL SWINGAWAY MANICURE ARMS • OPTIONAL HEAT & MASSAGE



Optional ottoman



Swingaway Manicure Trays



Client entrance/exit position



Manicure position



Magnetic manicure center tray

Tub Dimensions

- Height: 15.5" (39 cm)
- Width: 22" (56 cm)
- Depth: 26.5" (67 cm)
- Footrest Height Range: 16" - 22" (41 cm - 56 cm)

Chair Dimensions

- Height: 47" (119 cm)
- Width: 32" (81 cm)
- Depth: 38.5" (98 cm)

SaniJet® Electrical

- 110V / 220V available
- International plug options



CLUB CHAIR V2

STUNNING DESIGN FOR PURE LUXURY

The Club Chair V2 is an inviting, luxurious armchair that beckons the guest to relax. An easy nudge of the chair reveals the hidden pedicure bath trimmed with elegant Avonite™ and matching water-resistant laminate. Carefully engineered for exceptional ergonomics, the Club Chair V2 with SaniJet® is packed with practical features including a hand sprayer, commercial grade remote drain and adjustable footrest. The Club Chair V2 offers the ultimate blend of luxury, function, and aesthetic design.

OPTIONS

- Relaxor® heat & massage
- Swingaway manicure trays
- Center tray with locking magnets
- Pneumatic back tilt
- Matching ottoman
- Matching pedi stool
- Matching pedi trolley
- TuckAway™ copper or silver bowl
- SaniJet® plumbed hydrotherapy tub
- Power drain
- Discharge pump



Shown in manicure position with Shale Promessa®, Madagascar laminate, Pearl Avonite™ & optional ottoman

5TH AVENUE

LUXURY • AESTHETICS • ERGONOMICS



SANIJET® PIPELESS TECHNOLOGY • PREMIUM DESIGNER FINISHES • CHROME FIXTURES • DURABLE FIBERGLASS
TUB WITH AVONITE® TRIM • COMMERCIAL DRAIN • OPTIONAL HEAT/MASSAGE • MANICURE TRAY OPTION



Chair Dimensions

- Chair Height: 48" (122 cm)
- Chair Length: 36.75" (93 cm)
- Seat Height: 32" (81 cm)
- Seat Width: 32" (81 cm)

Sanijet® Tub Dimensions

- Height: 15.5" (39 cm)
- Width: 22" (56 cm)
- Depth: 26.5" (67 cm)

Electrical

- 110V / 220V available
- International plug options



Large center tray provides extra space during manicure



Convenient storage for manicure trays & locking casters for stability

5TH AVENUE

LUXURY • AESTHETICS • ERGONOMICS

With the small footprint and a well-appointed manicure chair, the 5TH Avenue glides back smoothly to reveal a hidden pedicure bath to optimize your treatment space. The 5TH Avenue makes no compromise as a space-saving chair with generous cushioning system that leave clients in a state of pure bliss.

FEATURES

- Premium Ultraleather® upholstery
- Strata™ plus memory foam system
- Locking in-line wheels
- Elegant Avonite™ trim
- Premium laminate
- Adjustable electric footrest (raises 9")

OPTIONS

- Sanijet® plumbed hydrotherapy tub
- Non-jetted plumbed footbath
- Non-plumbed TuckAway™ copper or silver bowl foot bath
- Tilt back, 25°
- Swingaway sidetrays & large center tray
- Relaxor® heat & massage system
- Ventilation system
- Matching pedi stool, pedi trolley, and ottoman



Sanijet® pipeless hydrotherapy with optional ventilation system

MYSTIA

MANI/PEDI CHAIR



HANDCRAFTED • TUCKAWAY™ HAMMERED COPPER OR SILVER BOWL • PADDED ADJUSTABLE FOOTREST • PREMIUM NATURSOFT™ UPHOLSTERY • DESIGNER LAMINATES • OPTIONAL HEAT/MASSAGE • OPTIONAL SWINGAWAY MANICURE ARMS



Chair Specifications

- Height: 45.5" (116 cm)
- Width: 30.25" (77 cm)
- Depth: 35" (89 cm)

SaniJet Specifications

- Height: 15.5" (39 cm)
- Width: 22" (56 cm)
- Depth: 26.5" (67 cm)

SaniJet® Power Options

- 110V / 220V available
- International plug options



pending



pending

MYSTIA

MANI/PEDI CHAIR

The space-saving Mystia™ mani/pedi combo chair is designed to provide a superior quality experience in tight spaces. Custom finished with the finest materials by L-E-C craftsmen, the stylish Mystia features a beautiful Avonite™ trimmed TuckAway™ foot bath with hammered copper or silver bowl and an adjustable footrest.

FEATURES

- Strata™ memory foam system
- Choice of standard Avonite™ surfaces
- TuckAway™ copper or silver bowl foot bath
- Choice of standard laminates
- Adjustable padded footrest
- Natursoft™ upholstery

OPTIONS

- SaniJet® plumbed hydrotherapy tub
- Upgraded Avonite™ surface selections
- Premium laminate finishes
- Swingaway manicure trays
- Relaxor® heat & massage
- Tilt back



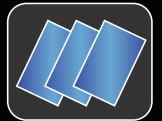
Shown with TuckAway™ & copper bowl, Coffee Bean laminate, Starshine Avonite™, Vanilla Crème upholstery & optional upholstered side arms

LUMA NAILSPACE

FRESH • FUNCTIONAL • STRIKING



Recessed power
& USB port



Bespoke Finishes

BESPOKE LAMINATE OPTIONS • MILLED AVONITE® WORK SURFACE • 2-DRAWER STORAGE
LED CHROMA LIGHTING OPTION • MOUNTED SURGE PROTECTOR • LED SLIMLINE LAMP



Specifications

- Width: 48" (122 cm)
- Height: 30" (76 cm)
- Depth: 18" (46 cm)
- Leg Space: Height: 27" (69cm)
Width: 28" (71 cm)

Desk Power

- 110V / 220V available
- International plug options

LUMA NAILSPACE

THE SPACE FOR NAIL DESIGN

The Luma™ Nailspace is a premium, built-to-order nail desk alternative from the USA; L-E-C's bespoke response to institutional looking nail desks sourced from Asia. Crafted from high quality hardwood, the Luma features acetone resistant laminate, a smoked tempered glass work surface and three (3) storage drawers. L-E-C's master craftsman build this highly functional nail-desk with ventilation ports and a hidden power port options, while a full spectrum LED task light makes manicure work easier. The Luma may be paired in a tandem configuration or ordered with Iceblock™ retail shelves.

FEATURES

- Acetone resistant laminate
- Smoked tempered glass work-surface
- Full spectrum LED task light
- Three (3) storage drawers (left or right side configuration)

OPTIONS

- Ventilation system
- Iceblock™ retail shelves
- Recessed power and USB



Ventilation ready



Recessed power and USB



Full spectrum LED task light

MADISON NAILSPACE

SLEEK • MODERN • SOPHISTICATED



Madison



Madison +STUDIO

MINIMALIST DESIGN • AMPLE AVONITE® WORK SURFACE • MOUNTED SURGE PROTECTOR • LED SLIMLINE LAMP



L|E|C®
LIVING EARTH CRAFTS



Specifications

- Length: 36.25" (92 cm)
- Height: 31" (79 cm)
- Depth: 18" (46 cm)

Desk Power

- 110V / 220V available
- International plug options



Recessed power & USB connection



Ventilation ready

MADISON NAILSPACE

Simple, yet elegant, the Madison nail desk is built-to-order in the USA by Living Earth Crafts' master craftsmen. The modern, open style Madison is milled from quality hardwoods and wrapped in beautiful, yet durable +Studio™ laminates that are polish and acetone resistant. Choose from an Avonite™ or inlaid tempered smoked glass work-surface. Complete with a full spectrum LED task-light, hidden power port with USB, built-in ventilation ports and ducting, the Madison is today's manicure station standard.

FEATURES

- Acetone and polish resistant laminates
- Avonite™ or smoked tempered glass work-surface
- Recessed power and USB
- Full spectrum LED task light

OPTIONS

- Ventilation system
- Technician stools
- Upgraded +Studio finishes
- LED-lit +Studio mirror box



Madison with mirror light box (optional)

OPTIA WORKSPACE **+STUDIO**



DESIGNER GLASS **+STUDIO**



DIVERSE STORAGE OPTIONS • CUSTOM WOOD STAINS OR LAMINATE FINISHES • LED CHROMA LIGHTING • LOCKING CASTERS • SURGE PROTECTED OUTLETS • DIGITAL WARMING DRAWER OPTION



DIGITAL WARMING DRAWER

The perfect addition to any table or trolley, providing a multifunctional solution to spa treatment needs. This hand-built unit features variable preset heating for hot towels, warming stones, or robes and linens.

- Variable heat settings for multiple service options
Low: robes & dry linens (up to 100°F)
Medium: stones & product warming (up to 120°F)
High: moist towels (up to 145°F)
- Wire basket for linens & towels
- Silicone mat for stone warming
- Pre-programmed timers with auto-shutoff

Digital Warming Drawer Power

- 120V - 515 watts/4.3 amps
- 220V - 515 watts/2.3 amps

ETL pending | CE pending



Optia Dimensions

- Width: 24" (60 cm)
- Height: 40" (86 cm)
- Depth: 21" (53 cm)



Designer Glass Dimensions

- Width: 24" (60 cm)
- Height: 35" (89 cm)
- Depth: 18" (45 cm)

OPTIA WORKSPACE +STUDIO

THE ULTIMATE IN FUNCTIONAL DESIGN

This beautiful, space-saving design features a topside IceBlock work surface, a built-in digital warming drawer, LED Chroma lighting, side compartments perfect for small trash cans or other accessories, and upgraded laminate.

FEATURES

- Multi-functional working space
- Built-in digital warming drawer for towels or stones
- Topside IceBlock or laminate work surface
- Multiple side compartments
- Attractive LED Chroma lighting option
- +Studio laminate options

DESIGNER GLASS +STUDIO

VERSATILE TROLLEY WORKSTATION

With a backlit IceBlock work surface and sleek modern laminate options, the Designer Glass Trolley will infuse a glamorous feel to your treatment room. Practical features include a surge protected power outlet, generous storage, and the option of one or two digital warming drawers.

FEATURES

- Multi-functional working space
- Built-in digital warming drawer for towels or stones
- LED lit IceBlock work surface
- Ample product storage
- +Studio laminate options
- Locking casters

TROLLEYS

VERSATILE AND FUNCTIONAL WORKSTATIONS



DESIGNER



ALPHA 2



WOOD STAIN OR LACQUER FINISHES • LOCKING CASTERS • GENEROUS WORK SURFACE • SURGE PROTECTED OUTLETS
• MULTI-PURPOSE STORAGE AREAS AND DRAWERS



Designer Dimensions

- Width: 27" (69 cm)
- Depth: 20" (50 cm)
- Height: 40" (102 cm)
- Top Drawer: 22"w x 13"d x 6" h
- Center Compartment: 23"w x 12"d x 13"h
- Bottom Drawer: 22"w x 13"d x 6"h



DESIGNER TROLLEY

ELEGANT AND DISCRETE

The Designer Trolley from Living Earth Crafts is designed to provide discrete storage and convenient access for both a hot stone warmer and/or a hot towel cabi. The stainable hardwood cabinet features quality hardware and a water resistant lining.



Element Dimensions

- Width: 20" (51 cm)
- Depth: 17.25" (44 cm)
- Height: 39.5" (100 cm)
- Tray: 17.25"w x 9.75"d
- Top Drawer: 17"w x 15"d x 3.75"h
- Center compartment: 18.5"w x 16.75"d x 16"h
- Bottom Drawer: 16.75"w x 14.5"d x 8"h

ELEMENT TROLLEY

VERSATILE SPA TREATMENT WORKSTATION

Elegant yet versatile spa treatment workstations. Discreetly store away towel warmers, along with other supply essentials, in these stylish yet functional workstation trolleys. Designed to complement LEC's legendary treatment tables, each features simple storage and durable, easy-to-clean and maintain work surfaces.



Alpha 2 & 3 Dimensions

- Width: 18" (46 cm)
- Height: 33" (83 cm)
- Cabinet Depth: 16" (40 cm)

ALPHA 2 & ALPHA 3

FUNCTIONAL WORKSTATIONS

The Alpha Trolley Series is created to provide your spa with simple, sturdy and affordable work station. Both feature durable lacquer finishes, and a variety of drawer and storage configurations.

FACEPILLOWS & PLATFORMS

FEATURING CLOUDFILL™ TECHNOLOGY



CLOUDFILL™ POLY GEL FIBER BLEND WITH MEMORY FOAM LAYER • DOUBLE NEEDLE CONTRAST STITCHING • CONFORMING
CALMING & SOOTHING SENSATION • SUMPTUOUS • FITS MOST INDUSTRY PLATFORMS • EARTH FRIENDLY NATURSOFT™ UPHOLSTERY



PLATFORMS & FACEPILLOWS

Living Earth Crafts is renowned for their highly engineered, proprietary platforms, which combined with our new line of luxurious cushions; provide the most comfortable treatment experiences in the industry.

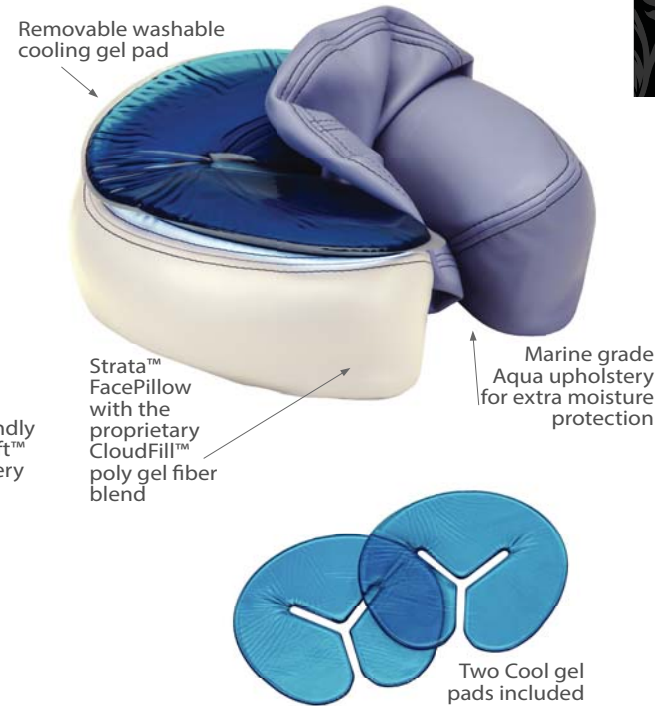
STRATA™ FACEPILLOW

We enhanced the comfort of our CloudFill™ technology by adding a layer of sumptuous viscoelastic memory foam to create the Strata FacePillow, the most comfortable, adaptive, stress relieving FacePillow our industry has ever seen.



STRATA™ COOL FACEPILLOW

We have added this proprietary removable cooling gel pad to the Strata™ FacePillow to create an immediate soothing sensation and dramatically reduce swelling and sinus pressure throughout the spa treatment.



FACEPILLOW

Our product designers have fused the finest comfort materials available today, a proprietary blend of blown gel and poly fibers we call CloudFill™ to create a downy soft, yet supportive cushion. Our FacePillow comes upholstered with our luxurious Natursoft™ upholstery with premium double needle stitching.



CARESS™ SELF-ADJUSTING PLATFORM

Patented Soft-petals™ deflect to your client's unique face shape. Extended height and angle adjusts with a single locking lever.



FLEX-REST™ SELF ADJUSTING PLATFORM

Patented elastomeric platform flexes to reduce pressure points and mold to client's face. Extended height and angle adjusts with a single locking lever.



DELUXE ADJUSTABLE PLATFORM + FACEPILLOW

Extended height & angle adjustments with single locking lever. Comes standard with LEC's incredible FacePillow, made with our CloudFill™ poly-gel blend.





SPIRIT™ MASSAGE TABLE

Our top-of-the-line portable, the multi-functional Spirit™ is loaded with features like rounded corners, 3" multilayer cushioning, and Reiki end panels for convenient leg and knee room when working up close.

- Jointless™ round corner design
- Hard Maple legs, braces & outlets
- Aircraft quality Russian Birch deck
- Hardwood reinforcing ribs
- ½ Reiki / ½ Standard endplates
- Package option includes Flex-Rest™ platform, FacePillow and carry case



AVALON XD™ PACKAGE

This premium, handcrafted value package comes standard with incredibly comfortable cushioning, Natursoft™ upholstery, and a state-of-the-art Flex-Rest™ self-adjusting platform. Avalon XD™ is a complete professional package with carry case designed to last a lifetime.

- Managed forest Hard Maple legs, braces and outlets
- Aircraft quality Russian Birch plywood decking
- Mid-brace™ cradle-lock cabling system
- ½ Reiki / ½ Standard endplates
- Package option includes Flex-Rest™ platform, FacePillow and carry case



SPIRIT PREGNANCY™

This premium table accommodates women in the early stages of pregnancy, offering a clever, single cutout for maximum control and give in the breast and the stomach areas. Re-insert cushion plug and table transforms back into standard massage table.

- Ultra-comfortable mesh support
- Accommodates various stages of pregnancy
- Rounded corners for accessibility



LUNA™ ULTRALIGHT PORTABLE

Luna's™ ultra-light Reiki-ready aluminum frame, Shimmy-Lok™ leg brace system, and superior cushioning have birthed what is arguably the lightest, strongest, most stable portable massage table on the market.

- Reiki-ready super-lite aluminum frame
- Patented Shimmy-Lok™ leg brace system
- Pro-Lite™ cushioning system
- Natursoft™ Upholstery – 100% PU in 16 colors
- Aircraft quality Russian Birch plywood decking
- Package option includes Flex-Rest™ platform, FacePillow and carry case

PORTABLE MASSAGE TABLES & CHAIRS

LIGHTWEIGHT, STRONG, LUXURIOUS

Our precision crafted portable tables and chairs feature the finest sustainably sourced materials in the world, including our proprietary Natursoft™ upholstery, managed forest Hard Maple and Russian Birch decking, and luxurious, multi-layered CFC-Free cushioning. Perfect for out-calls and in-room treatments.

AVILA II™

The Avila II™ is infinitely adjustable, ergonomically designed, and ultra-compact.



- Patented composite frame
- High-quality, Soft-Support™ removable pads
- Natursoft™ Upholstery – 100% PU in 16 colors
- Value Package includes carry case and sternum pad
- Lifetime Limited Warranty

ERGO PRO II™

The re-designed Ergo Pro II is ergonomically engineered to provide proper alignment and the ultimate comfort for you and your client. This exceptionally versatile chair seats clients ranging from 4'6" to 6'6", and weighs only 19 lbs.



- 600-lbs. working weight
- Angle adjustable seating
- Replaceable pads
- Removable leg rests for easier client access



Samadhi-Pro Deluxe Table Warmer

A full-sized table warmer and luxurious fleece-pad-in-one, it comes complete with a full inch of fleece, a removable digital LCD temperature controller, a quick-heat feature, auto over-heat protection, flannel fabric, and non-slip elastic straps. 72" x 30" (183 x 76 cm). One year warranty.



Element Digital Table Warmer

A full-sized table warmer with a removable digital LCD temperature controller, a quick-heat feature, auto over-heat protection, flannel fabric, and non-slip elastic straps. 72" x 30" (183 x 76 cm). One year warranty.



Basics Table Warmer

A full-sized table warmer complete with adjustable heat settings, a comfortable fleece top, and elastic straps. 72" x 30" (183 x 76 cm). One year warranty.



Fitted Disposable Headrest Covers

Provide clients with an unexpectedly soft layer of sanitary comfort. Made of absorbent, hypo-allergenic, medical-grade fiber that forms perfectly to the shape of your Earthlite cushion. Available in 50-count.



Flat Disposable Headrest Covers

Protect your clients with a super-soft layer of comfort and sanitation. Made of absorbent medical-grade fiber that is also hypo-allergenic, they are perfect in your massage room or on the go. Available in 100-count.



Fleece Crescent Cover

A fitted Fleece Crescent Cover provides an entire inch of extra comfort and softness. Developed to fit most massage table headrest designs, ours is machine washable, dryable, and super comfortable.



Flannel Sheet Set

Made with pre-shrunk cotton flannel and double-napped for an extra level of soft, luxurious comfort. They will withstand repeated washings. Package includes top sheet, fitted sheet and crescent cover.



Polar Fleece Blanket

Best lightweight yet still warm fleece blanket. It is the softest most comfortable blanket available.



Flannel Bolster Covers

Protect your bolster while adding warmth and comfort for your clients. Available in Natural

LINENS & FLEECE

MULTIPLE TABLE COVERING OPTIONS

Our massage accessories and supplies incorporate the quality, durability, and performance features that are considered the most essential by massage professionals.



Basics Fleece Pad Set

Our Basics Fleece Pad Set adds an extra half inch of comfort to your table. This ultimate accessory protects the life of your table, fits most table brands, and is machine washable and dryable. Includes elastic end straps to prevent slipping. Comes complete with a fitted fleece crescent cover.



Deluxe Fleece Pad Set

An incredible value, our Deluxe Fleece Pad Set is twice the thickness of our Basics fleece pad with one luxurious inch of fleece and a snug elastic fit all the way around. It fits most table brands, is machine washable and dryable, and comes complete with a fitted fleece crescent cover.

PNEUMATIC ROLLING STOOLS

Our rolling stools offer heavy-duty wheels for ease of movement, rugged construction, and a 3" padded seat with a range of upholstery colors. Available standard in Natursoft™ or upgrade to UltraLeather® upholstery. Weight limit: 350 lbs. Low height option available (17" to 23"). Rolling stool also available with adjustable back support for added comfort.

- With or without back
- Height Range: 19" - 26" (48 cm - 66 cm)
- Low height range: 17" - 23" (43 cm - 58 cm)
- 15" seat (38 cm)
- 3" deluxe foam
- Wide variety of luxurious upholstery choices
- Metal base & footrest ring available
- Weight Capacity: 350 lbs (159 kg)



DUET MANI/PEDI COMBO STOOL

- Designed for both pedicure & manicure use
- Height range: 15" - 21" (38 cm - 53 cm)
- Heavy duty rolling casters
- Optional upholstery upgrade
- Optional 2" booster pad
- Rounded corner option available



SLIMLINE STOOL

The generously sized pneumatic rolling stool features comfortable height adjustable seating and easy, quiet mobility with 360° swivel, suitable for multiple work environments and uses. Designed not only for use in massage and spa rooms, but also for use in offices, kitchens, and garages. Expect both comfort and durability; the generous 17" molded cushion seat is upholstered with durable PU vinyl and commercially stitched. Soft, quiet casters allow for quiet, easy movement.

- Space saving design - no knob on backrest
- Generous 17" (43 cm) seat
- Height Range: 19" - 26" (48 cm - 66 cm)
- 3" deluxe foam
- Upholstery: Natursoft™, 100% PU upholstery in 5 colors.
- Weight Capacity: 350 lbs (159 kg)



CONTINUUM® DELUXE TECH CHAIR

This beautifully crafted adjustable chair is made of curved cherry veneer and cushion. The Deluxe technician's chair is extremely comfortable and low to the ground with a telescoping range of 12-1/4" to 15".

- Standard range (without 2" cushion): 14" to 16" (35.5 cm - 40.5 cm)
- Optional high range: 19" to 24" (48 cm - 61 cm)
- Available in dark or light wood finish.



CONTINUUM® STANDARD TECH CHAIR

Ergonomically designed with an extra firm padded back support and seat cushion the Standard Tech Chair provides total comfort. Available in a variety of colors to match your pedicure chair. Cast aluminum base ensures strength and durability. This stylish tech chair is low to the ground and complements the look of any Continuum pedicure spa.

- Standard range: 13" - 16" (33 cm - 40.5 cm)
- Optional high range: 18" - 24" (46 cm - 61 cm)
- Upholstery: Black, Chocolate, Almond or Cappuccino



DESIGNER STOOL

- Beautiful hardwood trim
- Height range: 21" - 28" (53 cm - 71 cm)
- Low height range: 17" - 22" (43 cm - 56 cm)
- 4" Strata™ padded seat
- Weight capacity: 350 lbs (159 kg)
- Heavy duty rolling casters
- Locking caster option



FOLDING PORTABLE STOOL

Matching colors and upholstery are the perfect complement to your table.

- 13" square seat (33 cm)
- 19" height (48 cm)



PEDI STOOL

- Hardwood frame
- 3" Strata™ foam
- Natursoft™ upholstery
- 15" square seat (38 cm)
- 12" height (30 cm)
- Weight capacity: 350 lbs (159 kg)
- Locking casters





COPPER ROLL-UP FOOTBATH

- Cart Dimensions: 21" square x 12.75" height (53 cm square x 32 cm height)
- Overall Height: 18" (46 cm) (with bowl)
- Includes footrest, splash guard (adds 3.5" to height)
- Pull handle allows ease of movement



HAMMERED COPPER or SILVER BOWL

- Diameter: 20" (51 cm)
- Height: 8.5" (22 cm)



TUCKAWAY BOWL

- Our beautiful bowls can be used with this convenient, non-plumbed pedicure option.
- Available in Copper or Silver



SLIMLINE LED TASK LAMP

- High-quality brushed steel finish, slimline design
- Bright Daylight™ LEDs for perfect color matching
- Lamp Brightness: 1,200 lumen at 12" (30 cm)
- Double flexible arm with 22" reach (56 cm)
- Maximum height: 18" (46 cm)
- Table lamp supplied with high quality steel clamp



SANIJET® PEDICURE FOOT BATH

- Hygienic pipeless hydrotherapy jets
- Locking wheels
- Comes with footrest, tub lid, pump, & filler hose



PEDI TROLLEY

- Gorgeous, functional and resilient
- Chemical resistant Avonite™ work surface
- Three pull-out storage trays
- Locking wheels
- Solid maple wood construction

MANI/PEDI OPTIONS

PERFECT FOR YOUR TREATMENT ROOM

LEC offers an array of high quality options and accessories to increase the versatility and performance of your manicure and pedicure equipment. From hammered copper pedi bowls to LED task lights to the Duet mani/pedi stool, Living Earth Crafts meets your every need.



OTTOMAN

Client comfort reaches new levels when you pair this luxurious ottoman with our mani/pedi combo chairs for use during manicures. Matching finishes and a handbag /shoe storage area keeps your salon neat and stylish.

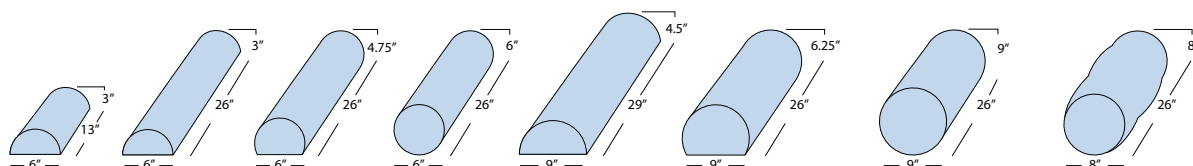
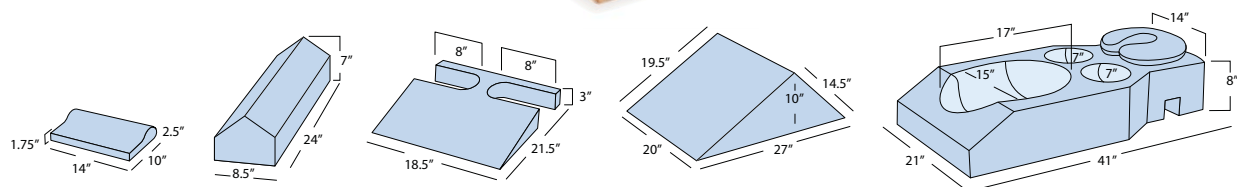
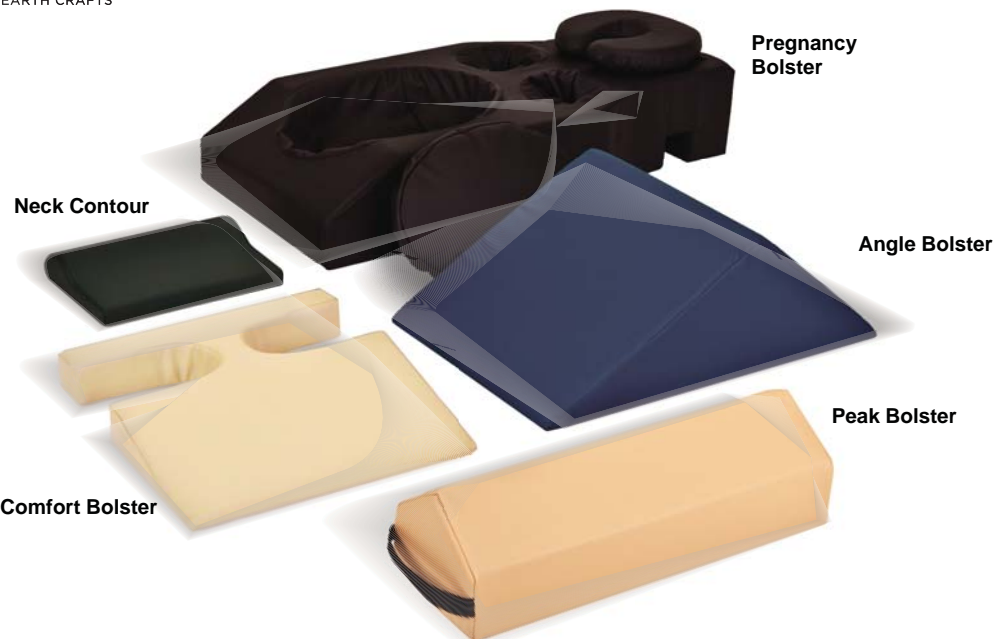
- Width: 22" (55 cm)
- Depth: 12" (30 cm)
- Height: 18" (45 cm)



FOOTREST PLATFORM

This generously sized footrest provides extra support and comfort for manicure clients. The extra padded surface is finished to match any of our mani/pedi loungers.

- Width: 24" (61 cm)
- Depth: 12" (31 cm)
- Height: 9" (23 cm)



BOLSTERS

COMFORT FOR ALL SHAPES & SIZES

We offer a broad array of bolsters and cushions. These products are made with environmentally friendly, CFC-free foam and are wrapped in our luxurious, yet durable Natursoft™ upholstery. Bolsters provide extra support and help relieve muscle strain when used under the knees, ankles, or neck. Available in many different sizes and in all 16 Natursoft™ upholstery colors.



TRAVELMATE™

Bring massage anywhere with the TravelMate™, a desktop, travel-ready massage support system that allows practitioners to bring massage therapy to any home, office, or professional venue. It even works with clients in wheelchairs. TravelMate™ sets up on any desk or table top and adjusts quickly and easily. Available in Mystic Blue, Black, Latte, and Teal.



MULTI-PURPOSE MASSAGE CRÈME

Our Multi-Purpose Massage Crème has a silky glide and long-lasting workability. Formulated with cold-pressed Almond oil to nourish and moisturize the skin, it is easily absorbed. Infused with healing Arnica and Lavender, it soothes the skin and body.



ALL-IN-ONE MASSAGE LOTION

Light, smooth, and easily absorbed to ensure your clients never leave feeling greasy or oily. With the optimal balance of glide and friction, it is perfect for any massage modality.



NATURAL UNSCENTED MASSAGE OIL

A proprietary blend of cold-pressed Almond, Sesame, Safflower, Grape Seed, and Avocado oils. Perfect for all massage modalities, it offers easy glide, superior workability, and the perfect amount of friction. Rich in powerful anti-oxidants including Vitamin E, this oil nourishes the skin while preserving beautifully.



ESSENTIAL OILS

Essential Oils from flowers and plants, used to promote health, beauty & well-being. 1/2 oz bottles in a variety of scents.



OIL CADDY

Massage therapists love this handy Oil Caddy accessory! Reach your massage oils, lotions and creams easily with our caddy, without leaving your client's side. Attaches around your waist easily. 100% heavy-duty nylon. Belt included.



NATURAL NUT FREE UNSCENTED MASSAGE OIL

Nut Free Massage Oil is an allergy-free alternative to traditional nut oils. A custom blend of five natural cold pressed nut free oils with Jojoba oil and Vitamin E which leave the skin feeling soft and satiny. Paraben Free, Silicone Free and Mineral Oil Free.



OASIS® WATER DISPERSABLE MASSAGE OIL

A proprietary blend of cold-pressed Almond, Sesame, Safflower, Grape Seed, and Avocado oils. Perfect for all massage modalities, it offers easy glide, superior workability, and the perfect amount of friction. Rich in powerful anti-oxidants including Vitamin E, this oil nourishes the skin while preserving beautifully.



USB AROMATHERAPY DIFFUSER

The USB Aromatherapy Diffuser is an easy plug-in design that provides a personalized and subtle method for aromatherapy services. It's ready to use design uses an effective "dose" control method that needs only a few drops of your guest's preferred fragrance to disperse the essence through the length of the treatment.



DIFFUSER

The Aroma-Stream is a clean, safe and effective way of vaporizing essential oils without using a hot ring or naked flame. Instead, a stream of air diffuses the essential oils, ensuring the purity of their fragrance.



BOTTLE PUMPS

Our high quality pumps make for easy dispensing and refilling the smaller sizes a breeze. Available for gallon and 8 oz sizes.

OILS & CRÈMES

Formulated specifically to enhance the spa experience, Living Earth Crafts' line of oils, crèmes, and lotions feature a proprietary blend of the finest all-natural oils available. Infused with key vitamins and essential oils, they offer unprecedented moisturizing and healing properties. And of course, they are water-dispersible, Paraben and Silicone free.

"I work with Living Earth Crafts because their design team consistently helps me push the frontiers of spa design and development."

CARY COLLIER

Spa Consultant & Founder
BluSpas Inc.

EARTHLITE UV HOT TOWEL CABINET

DEPENDABLE • COMPACT • CONVENIENT



UL LISTED • CONSISTENT HEAT RANGES • UV SANITIZING
ONE YEAR LIMITED WARRANTY • THREE CONVENIENT SIZES • 120V & 220V AVAILABLE



EARTHLITE UV HOT TOWEL CABINET

The industry leader in massage and spa equipment has developed a proprietary line of UV Hot Towel Cabinets. These proprietary warmers have been designed and engineered to produce consistent heat ranges, durable construction and easy operation. Our signature silver door is surrounded with your choice of white or black cabinet and three convenient sizes. Introducing the Earthlite UV Hot Towel Cabinet, designed with quality in mind.

Features

- UL Listed
- Rust proof aluminum interior
- Towel rack & drip pan included
- UV sanitizing
- Extra hot 160-175 °F heat
- 120 or 220 Volts
- 3 convenient compact sizes
- 1 year limited warranty
- Mini and Standard sizes available in 2 colors

EXTERIOR COLORS



WHITE



BLACK



BRUSHED ALUMINUM

DOOR



LARGE - Double Door - UV Hot Towel Cabinet

- 120 V
- Aluminum doors
- White exterior only
- Holds approximately 128 wet 12"x12" wash cloths

Exterior dimensions
width: 16" (40cm)
height: 17.5" (44cm)
depth: 16.5" (42cm)
volts: 120V (3.0 amps)

Interior dimensions per section
width: 13" (33cm)
height: 6" (15cm)
depth: 12" (30cm)



STANDARD UV Hot Towel Cabinet

- 120 V available in Black or White exterior
- 220 V available in White exterior and international plug
- Aluminum door
- Holds approximately 72 wet 12"x12" wash cloths

Exterior dimensions
width: 17.5" (44cm)
height: 14" (35cm)
depth: 11" (28cm)
volts: 120V (1.5 amps)
220V (0.8 amps)

Interior dimensions
width: 14.5" (37cm)
height: 10" (25cm)
depth: 7" (18cm)



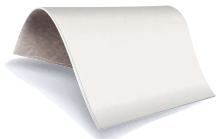
MINI UV Hot Towel Cabinet

- 120 V
- Black or white exterior available
- Aluminum door
- Holds approximately 24 wet 12"x12" wash cloths

Exterior dimensions
width: 13.5" (34cm)
height: 10" (25cm)
depth: 11" (28cm)
volts: 120V (1.1 amps)

Interior dimensions
width: 10.5" (26cm)
height: 5.5" (14cm)
depth: 7" (18cm)

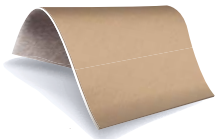
NATURSOFT™ 100% PU



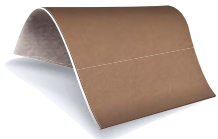
WHITE



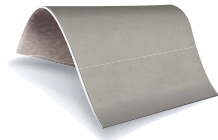
VANILLA CREME



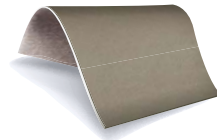
MARIE'S BEIGE



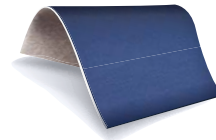
LATTE



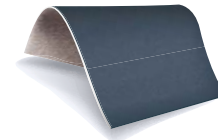
STERLING



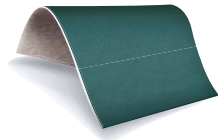
SAGE



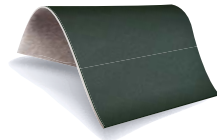
SAPPHIRE



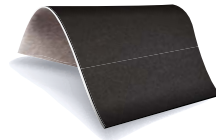
MYSTIC BLUE



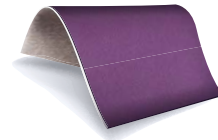
TEAL



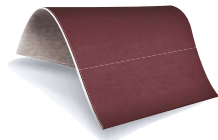
HUNTER



BLACK



AMETHYST



BURGUNDY

ULTRALEATHER® (Selected Examples) Medical Grade



WHITE



SILVER PEARL



IVORY



ALMOND



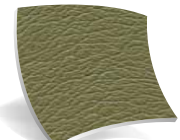
SAND



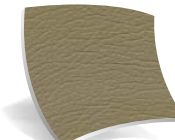
SILK



WHEAT



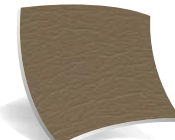
GREEN TEA



PAPYRUS



CURRY



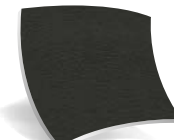
TAUPE



CHARCOAL



BALTIC



BLACK

PROMESSA® (Selected Examples) Medical Grade



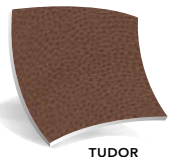
SNOW



WOODPECKER



SADDLE



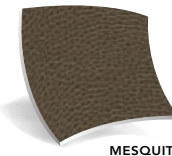
TUDOR



EBONY

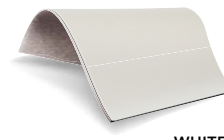


HORSEHAIR

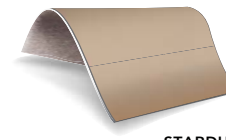


MESQUITE

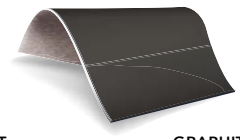
Marine Grade Options



WHITE



STARDUST



GRAPHITE GREY

STANDARD LAMINATE OFFERINGS

- 5th Avenue
- Club V2
- Club LE
- Contour
- Contour LX
- Fusion
- Luma Nailspace
- Madison Nailspace
- Mystia
- Nuage Vector
- Optia Workspace



+STUDIO LAMINATE OFFERINGS

- Century City
- Club LE
- Club V2 +Studio
- Contour
- Contour LX
- Designer Glass Trolley
- Fusion +Studio
- Infinity GT
- Luma Nailspace +Studio
- Madison Nailspace +Studio
- Nuage Pedestal +Studio
- Nuage Vector +Studio
- Optia Workspace +Studio



STANDARD AVONITE OFFERINGS

- 5th Avenue
- Club V2
- Club LE
- Contour
- Contour LX
- Designer Trolley
- Luma Nailspace
- Madison Nailspace
- Melrose
- Mystia
- Pedi Trolley



DESIGNER AVONITE™ OFFERINGS

- 5th Avenue
- Club Chair LE
- Club Chair V2
- Luma Nailspace +Studio
- Madison Nailspace +Studio



WOOD STAINS

Finishes for treatment tables, loungers, and designer trolley collection



LACQUERS

Finishes for treatment tables & designer trolley collection



GLASS OFFERINGS

Tempered glass worksurface color options for mani/pedi collections

- Club Chair LE
- Luma Nailspace +Studio
- Madison Nailspace +Studio



WARRANTY & SERVICE

ABSOLUTE SATISFACTION

All Living Earth Crafts (L·E·C) products are built with the utmost of care. If you are not completely satisfied with your L·E·C product and would like to return it, please contact your Sales Representative within 30 days of receipt for a Return Authorization (RA) number. Customers are responsible for return shipping costs and a 20% restocking fee. All returned items must be in new condition, in the original packaging with the original receipt of purchase. L·E·C will not accept a returned package without an RA number. Products returned to the factory damaged are the responsibility of the sender. Custom tables and custom accessories do not qualify for our 30-day return policy but are otherwise warranted as noted below.

LIFETIME LIMITED WARRANTY

Living Earth Crafts (L·E·C) offers an industry best warranty, worldwide, on all tables and accessories. We guarantee our table frames against defects in material and workmanship for as long as the original purchaser owns the table, or five years after the model is discontinued. Foam and upholstery covering are warranted for three years. Hydraulic systems, motors, controls and actuators are warranted for two years, including parts and labor. L·E·C's warranty service for stationary tables is offered on-site, where feasible. Accessories and options are warranted for one year, unless otherwise noted. L·E·C may repair or replace defective components at our discretion. For factory repairs on portables, the customer is responsible for shipping costs associated with returning the product to the factory. L·E·C will return the warranted product, standard shipping pre-paid, to customers in the continental US. International customers are responsible for any applicable duties and taxes, as well as all shipping charges inbound and outbound. Normal wear and tear, and costs associated with maintenance procedures, and damage caused by accident, misuse, improper maintenance, harsh operating environments or neglect (which includes tears in the upholstery and damage caused by harsh chemical-based cleaners) are not covered under this warranty. All warranties are limited to repair or replacement, at L·E·C's discretion, unless otherwise stated.

TO OBTAIN WARRANTY SERVICE

Please contact Living Earth Crafts at (800)358.8292 or (760)597.2155, or email us at info@livingearthcrafts.com. Please have proof of purchase and the product serial number readily available to ensure expedited service.

INSURED DELIVERY

Your Living Earth Crafts table and accessories are carefully inspected, packaged in protective materials, and then insured against damage during shipment. To ensure full coverage, please inspect all tables for freight damage at time of delivery. If you notice any damage to the exterior of the box and/or the product itself, be sure to note all damages prior to signing the shipping/delivery paperwork, and notify L·E·C immediately.

COMMITTED TO THE ENVIRONMENT

CARING FOR OUR ENVIRONMENT WITH EARTH-FRIENDLY MATERIALS AND A ZERO-CARBON FOOTPRINT

Living Earth Crafts sets the standard for eco-friendly practices and materials:

- Extensive use of managed forest hardwoods. L·E·C has the industry's first FSC-certified production facility (Forest Stewardship Council)
- Eco-friendly yet luxurious Natursoft™ upholstery (100% PU with biodegradable rayon backing)
- CNC-optimized wood cuts to minimize scrap, and intensive recycling down to the sawdust
- Energy-efficient factory lighting and climate control
- Water-based lacquers and glues
- CFC-free cushioning
- Electric vehicle charging stations

CARING FOR OUR COMMUNITY: GIVING BACK

Living Earth Crafts appreciates its position as a leading provider of spa equipment and understands its obligation to play a positive role in our global community. Thus, among other things, L·E·C and its employees give back, by:

- Donating a portion of our profits and production to local, national and global conservation programs
- Sponsoring the ERT™ (Emergency Response Team), a group of handpicked massage and spa therapists who deliver therapeutic massage to victims and relief workers in the aftermath of world disasters
- Supporting partnerships, including Sustainable Harvest, Trees for the Future, American Forests® and Green Spa Network, to plant a tree for every spa and massage table sold by L·E·C to eliminate our carbon footprint





THE CHOICE OF WORLD CLASS SPAS

AM RESORTS • AMAN RESORTS • AMAZING LASH • ANANDI RESORTS • ARIA RESORT • AUBERGE RESORTS • BELLAGIO • BLISS SPAS • BULGARI • CAESARS PALACE
CANYON RANCH • CARNIVAL CRUISE LINES • CLARINS • COMO HOTELS & RESORTS • CONRAD HOTELS • COSMOPOLITAN LAS VEGAS • DELOS LIVING • DESTINATION HOTELS &
RESORTS • DISNEY HOTELS • DOLCE SALON & SPAS DREAMS CANCUN • ELIZABETH ARDEN RED DOOR SPAS • EMIRATES TIMELESS SPAS • ENCHANTMENT RESORT • EQUINOX
ESPA INTERNATIONAL FACEBOOK • FAIRMONT WILLOWSTREAM SPAS • FOUR SEASONS HOTELS & RESORTS • GHM HOTELS • GLENEAGLES HOTEL • GOLDEN DOOR SPAS
GOOGLE • GRAND WAILEA RESORT • GREENBRIER • GROVE PARK INN • HARD ROCK HOTELS • HILTON HOTELS • HOTEL DEL CORONADO • HYATT HOTELS • INN AT
PALMETTO BLUFF INTERCONTINENTAL • JW MARRIOTT • KEMPINSKI HOTELS • LA COSTA RESORT & SPA • LE MÉRIDIEN • LIVING OCTAVE • LODGE AT TORREY PINES • LOEWS
RESORTSMANDARIN ORIENTAL HOTELS • MARRIOTT HOTELS • MGM RESORTS • MII AMO • MIRAVAL • MONTAGE RESORTS • NEMACOLIN WOODLANDS RESORT
NOBLE HOUSE RESORTS NORDSTROM SPAS • OBEROI HOTELS • OJAI VALLEY INN • OLD COURSE HOTEL - ST. ANDREWS • OMNI HOTELS • ONE & ONLY REETHI RAH • ONE HYDE
PARK • PALA CASINO • PALACE LUCERNE • PALACE RESORTS • PEBBLE BEACH RESORT • PECHANGA CASINO • PENINSULA HOTELS • PINEHURST RESORT • PRINCESS CRUISE
LINES • RAISON D'ÊTRE SPAS • RAMSIDE HOTEL - UK • RANCHO LA PUERTA • RANCHO VALENCIA • REGENT BEVERLY WILSHIRE • RESENSE SPAS
• RITZ CARLTON HOTELS & RESORTS • ROSEWOOD HOTELS & RESORTS • ROYAL CARIBBEAN CRUISE LINES • SANCTUARY
AT KIAWAH ISLAND • SHANGRI-LA HOTELS • SHERATON SPAS • SIX SENSES SPAS • ST. REGIS HOTELS • STEIN ERIKSEN LODGE • TAJ HOTELS AND RESORTS • THE BOULDERS
THE BREAKERS - PALM BEACH • TIGER RESORT • TRIOLOGY • TWO ROADS • VICEROY HOTELS & RESORTS • VIDAGO PALACE • VIEJAS CASINO RESORT • VIKING CRUISE
LINES • W HOTELS • WALDORF ASTORIA • WESTIN HOTELS • WOODHOUSE DAY SPAS • WYNN RESORTS • XPRESSPAS

Professional's Choice Awards



American Spa - Best Treatment Table
Favorite Company for Manufacturer Support

Professional's Choice Awards



American Spa - Favorite Nailcare
Furniture Manufacturer

ISPA Innovative Award



Century City
Infinity GT

Readers Choice Award



Favorite Manufacturer
Massage Table / Facial Chair

Environmental
Leadership Award



One Concept

LNE & Spa BEST Product 2015



Winner
Everest Eclipse

Green Spa Network
Sustainable Products Award



2015 Winner
Green Supplier / Manufacturer